

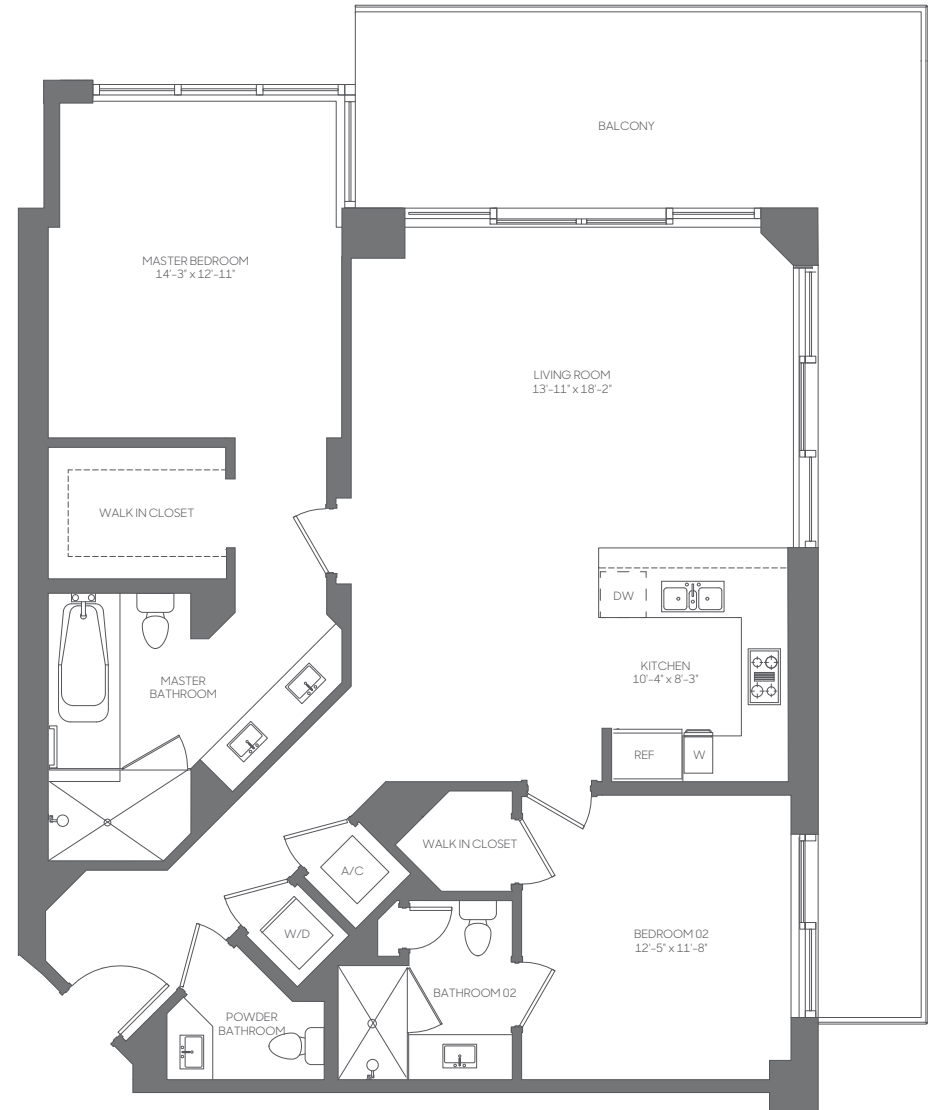
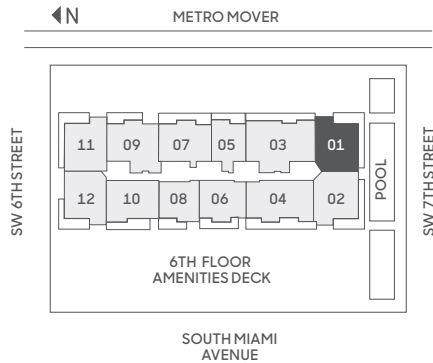


01
LINE

2 BEDROOMS | 2.5 BATHROOMS

FLOORS: 12, 14-36

RESIDENCE (12, 14-20)	1,400 sq. ft.	130 sq. mt.
RESIDENCE (21-32)	1,391 sq. ft.	129 sq. mt.
RESIDENCE (33-36)	1,385 sq. ft.	128 sq. mt.
BALCONY	280-411 sq. ft.	26-38 sq. mt.
TOTAL	1,665-1,802 sq. ft.	154-167 sq. mt.



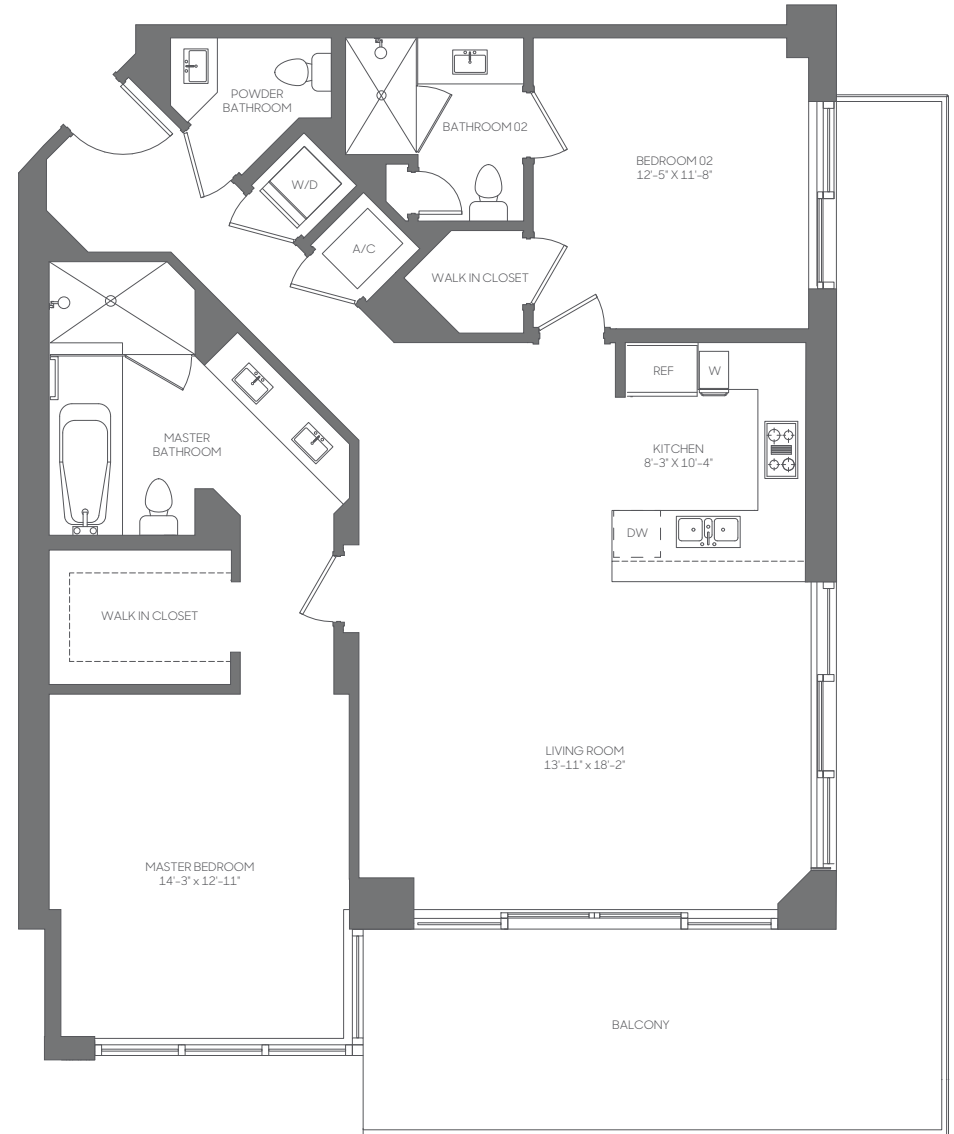
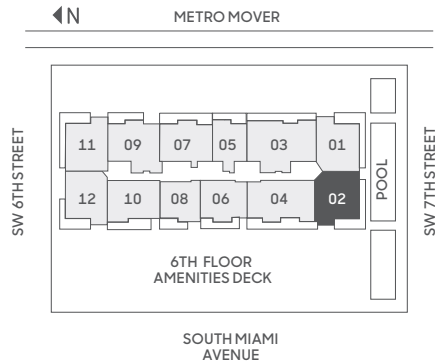
Stated dimensions are measured to the exterior boundaries of the exterior walls and the centerline of interior demising walls, including common elements such as structural walls and other interior structural components of the building, and in fact vary from the dimensions that would be determined by using the description and definition of the "Unit" set forth in the Declaration (which generally only includes the interior airspace between the perimeter walls and excludes interior structural components). For your reference, the area of the Unit, determined in accordance with those defined unit boundaries, is 1,265 square feet. Note that measurements of rooms set forth on this floor plan are generally taken at the greatest points of each given room (as if the room were a perfect rectangle), without regard for any cutouts. Accordingly, the area of the actual room will typically be smaller than the product obtained by multiplying the stated length times width. All dimensions are approximate and may vary with actual construction, and all floor plans and development plans are subject to change. The size and configuration of balconies and terraces varies throughout the building. The balcony depicted above is among the larger balconies and is not reflective of the actual size or configuration of the balcony for each unit of this unit type. For the actual size and configuration of the balcony for your unit, see Exhibit "2" to the Declaration of Condominium. See legal disclaimer on back cover.



02
LINE

2 BEDROOMS | 2.5 BATHROOMS FLOORS: 12, 14-36

RESIDENCE (12, 14-20)	1,401 sq. ft.	130 sq. mt.
RESIDENCE (21-32)	1,391 sq. ft.	129 sq. mt.
RESIDENCE (33-36)	1,386 sq. ft.	128 sq. mt.
BALCONY	280-411 sq. ft.	26-38 sq. mt.
TOTAL	1,665-1,802 sq. ft.	154-167 sq. mt.



Stated dimensions are measured to the exterior boundaries of the exterior walls and the centerline of interior demising walls, including common elements such as structural walls and other interior structural components of the building, and in fact vary from the dimensions that would be determined by using the description and definition of the "Unit" set forth in the Declaration (which generally only includes the interior airspace between the perimeter walls and excludes interior structural components). For your reference, the area of the Unit, determined in accordance with those defined unit boundaries, is 1,265 square feet. Note that measurements of rooms set forth on this floor plan are generally taken at the greatest points of each given room (as if the room were a perfect rectangle), without regard for any cutouts. Accordingly, the area of the actual room will typically be smaller than the product obtained by multiplying the stated length times width. All dimensions are approximate and may vary with actual construction, and all floor plans and development plans are subject to change. The size and configuration of balconies and terraces varies throughout the building. The balcony depicted above is among the larger balconies and is not reflective of the actual size or configuration of the balcony for each unit of this unit type. For the actual size and configuration of the balcony for your unit, see Exhibit "2" to the Declaration of Condominium. See legal disclaimer on back cover.

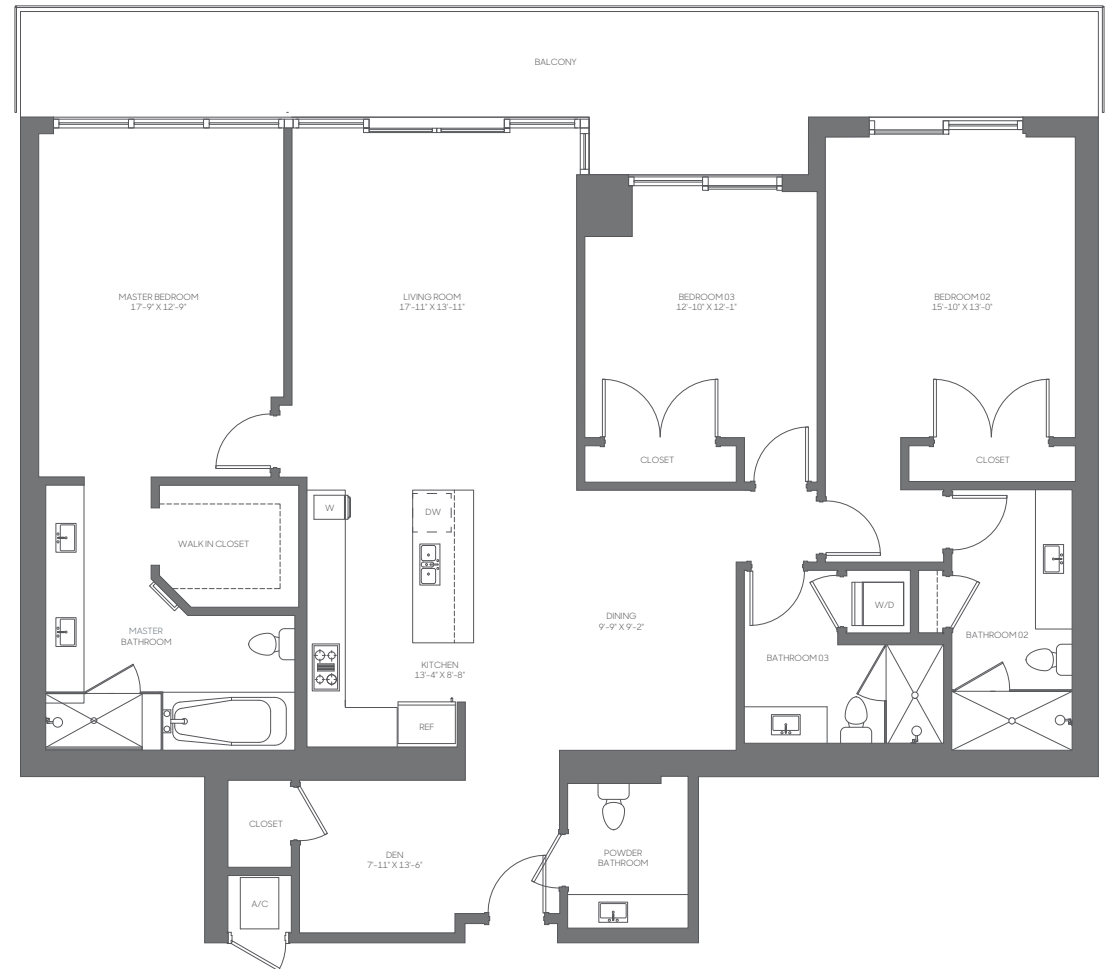
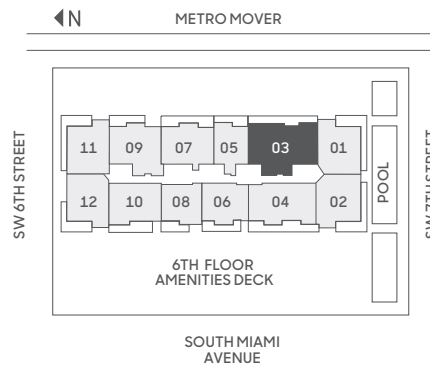


03
LINE

3 BEDROOMS | 3.5 BATHROOMS | DEN

FLOORS: 10, 12, 14-41

RESIDENCE (10, 12, 14-20)	2,057 sq. ft.	191 sq. mt.
RESIDENCE (21-32)	2,066 sq. ft.	192 sq. mt.
RESIDENCE (33-41)	2,083 sq. ft.	194 sq. mt.
BALCONY	182-342 sq. ft.	17-32 sq. mt.
TOTAL	2,248-2,401 sq. ft.	209-223 sq. mt.



Stated dimensions are measured to the exterior boundaries of the exterior walls and the centerline of interior demising walls, including common elements such as structural walls and other interior structural components of the building, and in fact vary from the dimensions that would be determined by using the description and definition of the "Unit" set forth in the Declaration (which generally only includes the interior airspace between the perimeter walls and excludes interior structural components). For your reference, the area of the Unit, determined in accordance with those defined unit boundaries, is 1,856 square feet (levels 10, 12, 14-20), 1,891 square feet (levels 21-32), and 1,918 square feet (levels 33-41). Note that measurements of rooms set forth on this floor plan are generally taken at the greatest points of each given room (as if the room were a perfect rectangle), without regard for any cutouts. Accordingly, the area of the actual room will typically be smaller than the product obtained by multiplying the stated length times width. All dimensions are approximate and may vary with actual construction, and all floor plans and development plans are subject to change. The size and configuration of balconies and terraces varies throughout the building. The balcony depicted above is among the larger balconies and is not reflective of the actual size or configuration of the balcony for each unit of this unit type. For the actual size and configuration of the balcony for your unit, see Exhibit "2" to the Declaration of Condominium. See legal disclaimer on back cover.

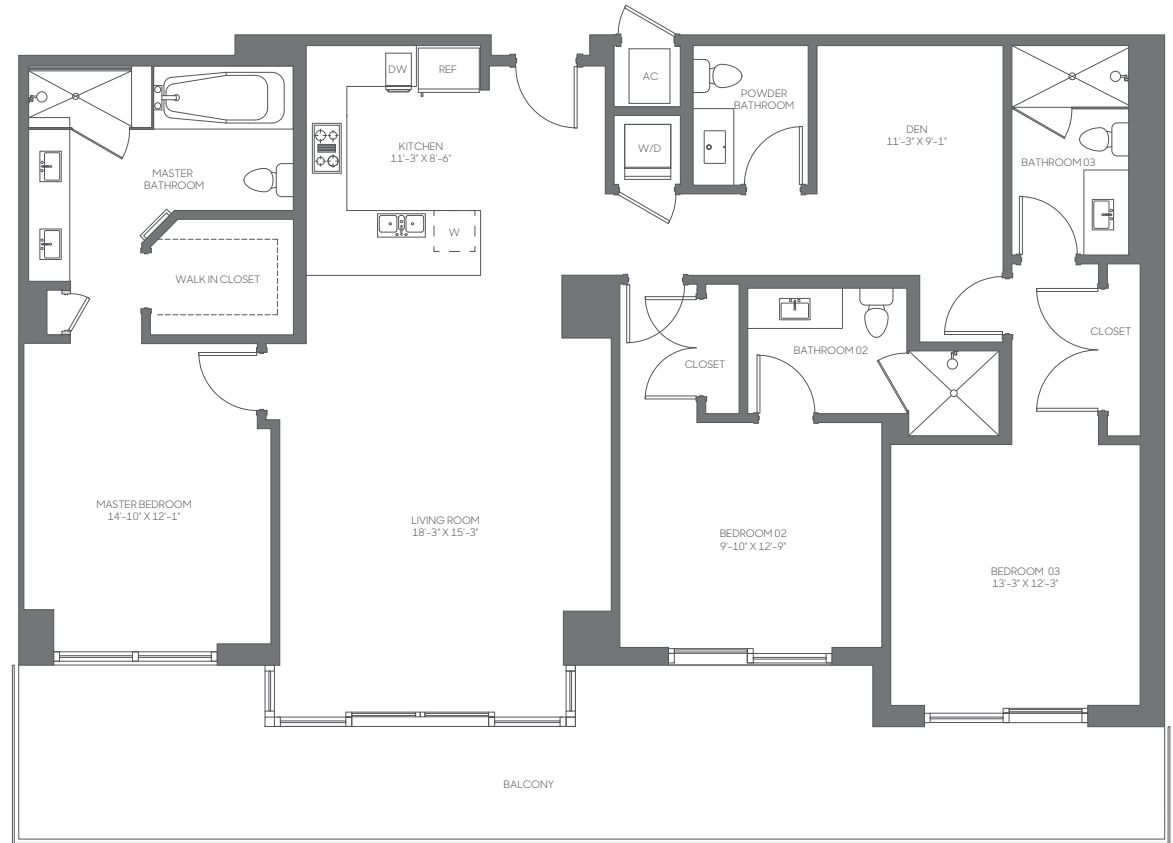
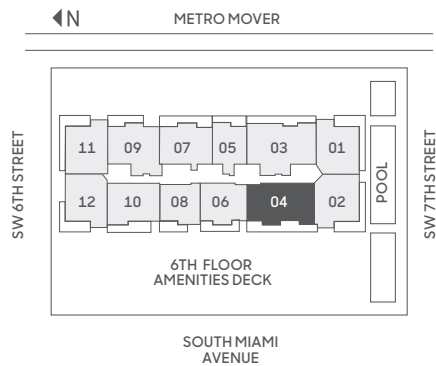


04
LINE

3 BEDROOMS | 3.5 BATHROOMS | DEN

FLOORS: 10, 12, 14-41

RESIDENCE (10, 12, 14-20)	1,782 sq. ft.	166 sq. mt.
RESIDENCE (21-32)	1,793 sq. ft.	167 sq. mt.
RESIDENCE (33-41)	1,799 sq. ft.	167 sq. mt.
BALCONY	207-387 sq. ft.	19-36 sq. mt.
TOTAL	2,000-2,180 sq. ft.	185-202 sq. mt.



Stated dimensions are measured to the exterior boundaries of the exterior walls and the centerline of interior demising walls, including common elements such as structural walls and other interior structural components of the building, and in fact vary from the dimensions that would be determined by using the description and definition of the "Unit" set forth in the Declaration (which generally only includes the interior airspace between the perimeter walls and excludes interior structural components). For your reference, the area of the Unit, determined in accordance with those defined unit boundaries, is 1,641 square feet (levels 10, 12, 14-20), 1,660 square feet (levels 21-32), and 1,677 square feet (levels 33-41). Note that measurements of rooms set forth on this floor plan are generally taken at the greatest points of each given room (as if the room were a perfect rectangle), without regard for any cutouts. Accordingly, the area of the actual room will typically be smaller than the product obtained by multiplying the stated length times width. All dimensions are approximate and may vary with actual construction, and all floor plans and development plans are subject to change. The size and configuration of balconies and terraces varies throughout the building. The balcony depicted above is among the larger balconies and is not reflective of the actual size or configuration of the balcony for each unit of this unit type. For the actual size and configuration of the balcony for your unit, see Exhibit "2" to the Declaration of Condominium. See legal disclaimer on back cover.

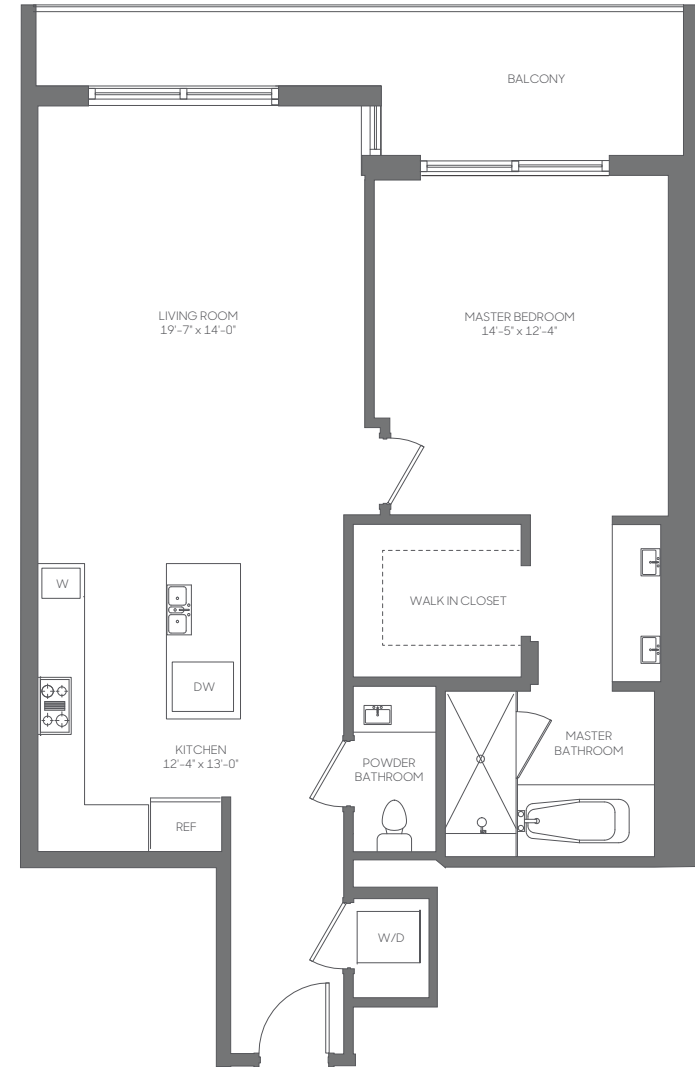
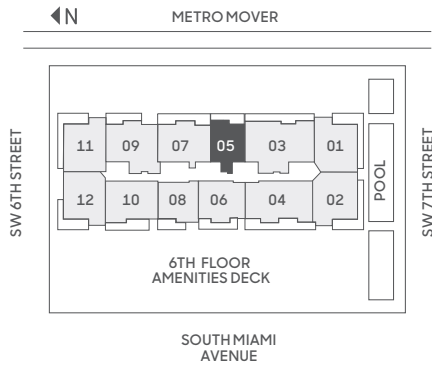


05
LINE

1 BEDROOM | 1.5 BATHROOMS

FLOORS: 9-12, 14-41

RESIDENCE	965 sq. ft.	90 sq. mt.
BALCONY	72-189 sq. ft.	7-18 sq. mt.
TOTAL	1,038-1,154 sq. ft.	96-107 sq. mt.



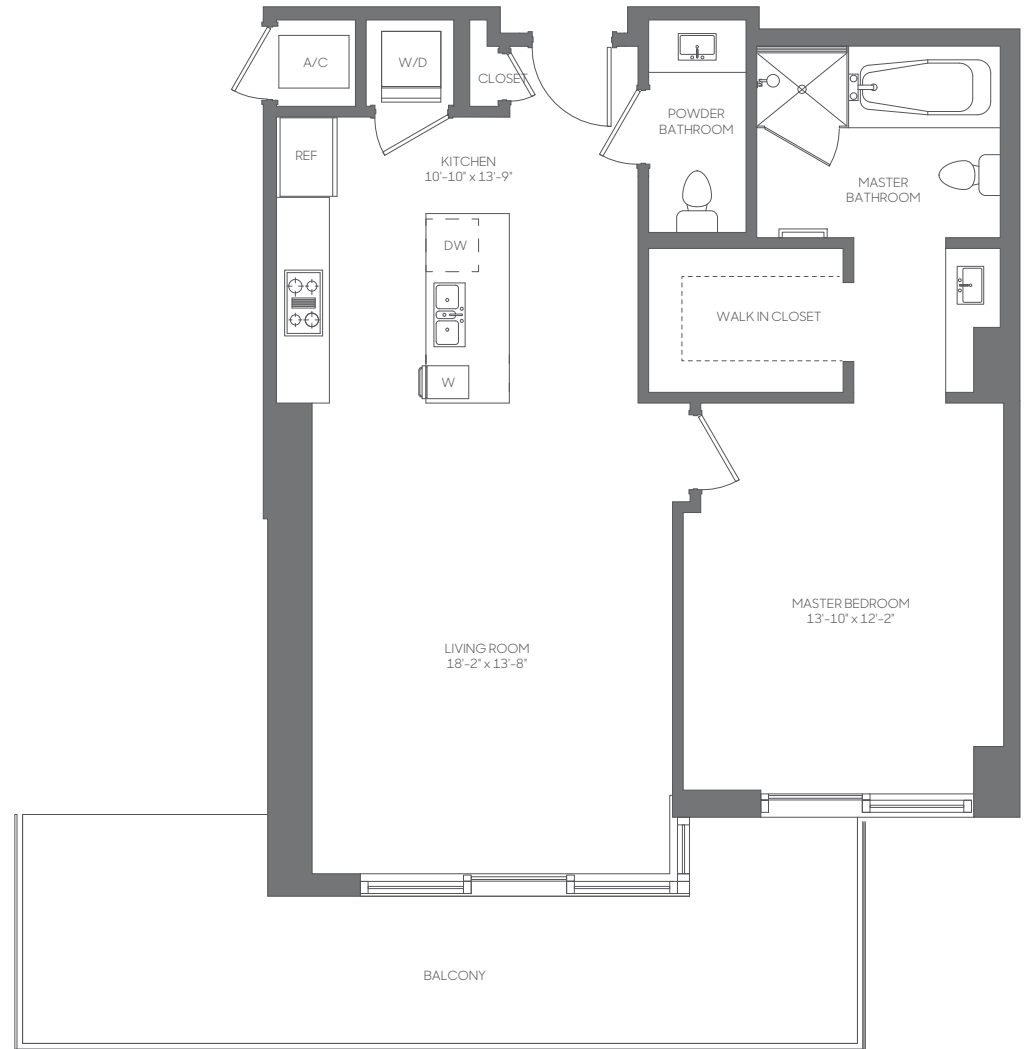
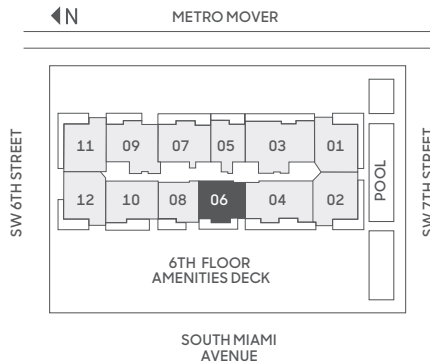
Stated dimensions are measured to the exterior boundaries of the exterior walls and the centerline of interior demising walls, including common elements such as structural walls and other interior structural components of the building, and in fact vary from the dimensions that would be determined by using the description and definition of the "Unit" set forth in the Declaration (which generally only includes the interior airspace between the perimeter walls and excludes interior structural components). For your reference, the area of the Unit, determined in accordance with those defined unit boundaries, is 878 square feet. Note that measurements of rooms set forth on this floor plan are generally taken at the greatest points of each given room (as if the room were a perfect rectangle), without regard for any cutouts. Accordingly, the area of the actual room will typically be smaller than the product obtained by multiplying the stated length times width. All dimensions are approximate and may vary with actual construction, and all floor plans and development plans are subject to change. The size and configuration of balconies and terraces varies throughout the building. The balcony depicted above is among the larger balconies and is not reflective of the actual size or configuration of the balcony for each unit of this unit type. For the actual size and configuration of the balcony for your unit, see Exhibit "2" to the Declaration of Condominium. See legal disclaimer on back cover.



06
LINE

1 BEDROOM | 1.5 BATHROOMS FLOORS: 8-12, 14-41

RESIDENCE	871 sq. ft.	81 sq. mt.
BALCONY	137-267 sq. ft.	13-25 sq. mt.
TOTAL	1,008-1,138 sq. ft.	93-105 sq. mt.



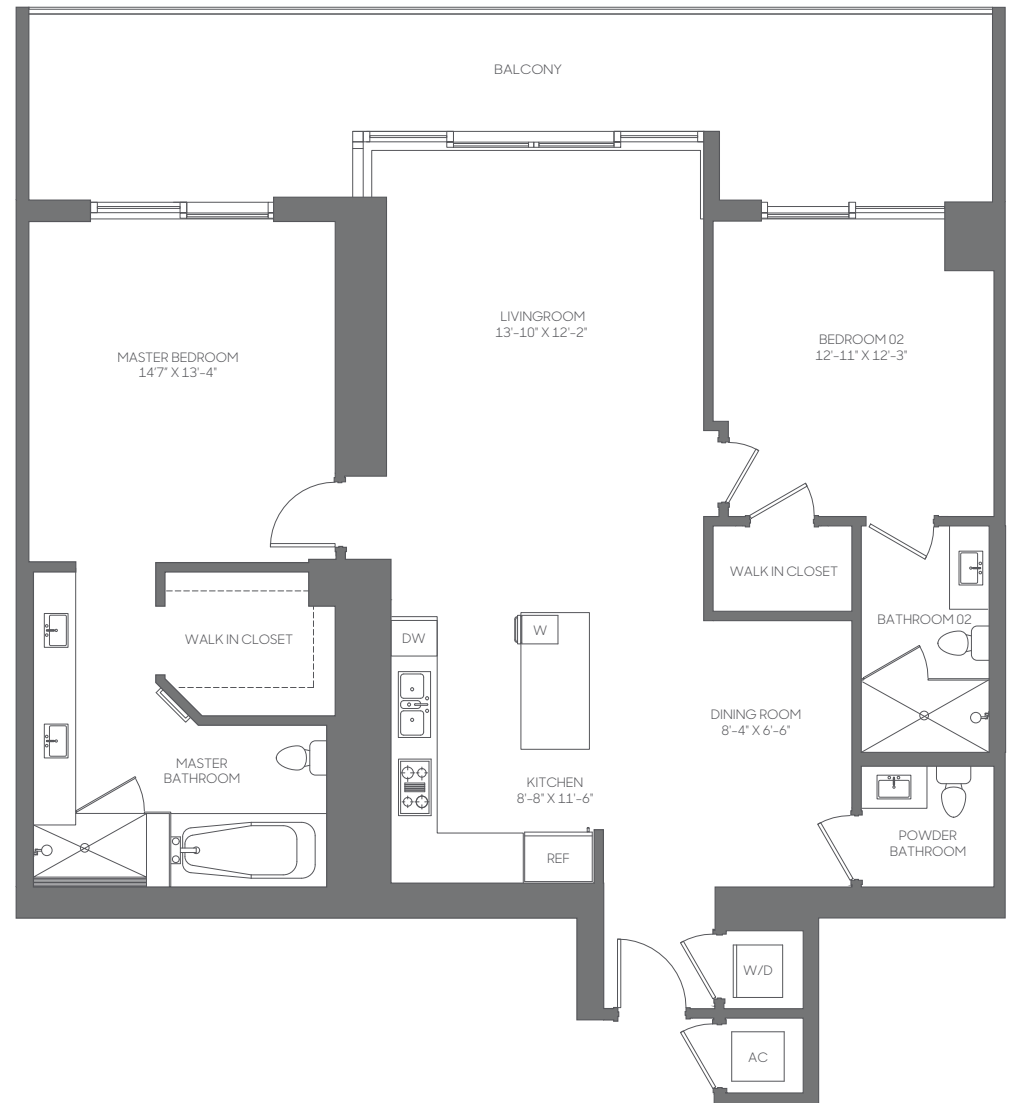
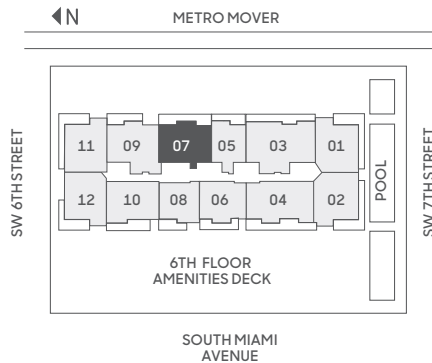
Stated dimensions are measured to the exterior boundaries of the exterior walls and the centerline of interior demising walls, including common elements such as structural walls and other interior structural components of the building, and in fact vary from the dimensions that would be determined by using the description and definition of the "Unit" set forth in the Declaration (which generally only includes the interior airspace between the perimeter walls and excludes interior structural components). For your reference, the area of the Unit, determined in accordance with those defined unit boundaries, is 810 square feet (levels 8-12, 14-32) and 812 square feet (levels 33-41). Note that measurements of rooms set forth on this floor plan are generally taken at the greatest points of each given room (as if the room were a perfect rectangle), without regard for any cutouts. Accordingly, the area of the actual room will typically be smaller than the product obtained by multiplying the stated length times width. All dimensions are approximate and may vary with actual construction, and all floor plans and development plans are subject to change. The size and configuration of balconies and terraces varies throughout the building. The balcony depicted above is among the larger balconies and is not reflective of the actual size or configuration of the balcony for each unit of this unit type. For the actual size and configuration of the balcony for your unit, see Exhibit "2" to the Declaration of Condominium. See legal disclaimer on back cover.



07
LINE

2 BEDROOMS | 2.5 BATHROOMS FLOORS: 8-12, 14-41

RESIDENCE	1,392 sq. ft.	129 sq. mt.
BALCONY	150-306 sq. ft.	14-28 sq. mt.
TOTAL	1,542-1,698 sq. ft.	142-157 sq. mt.



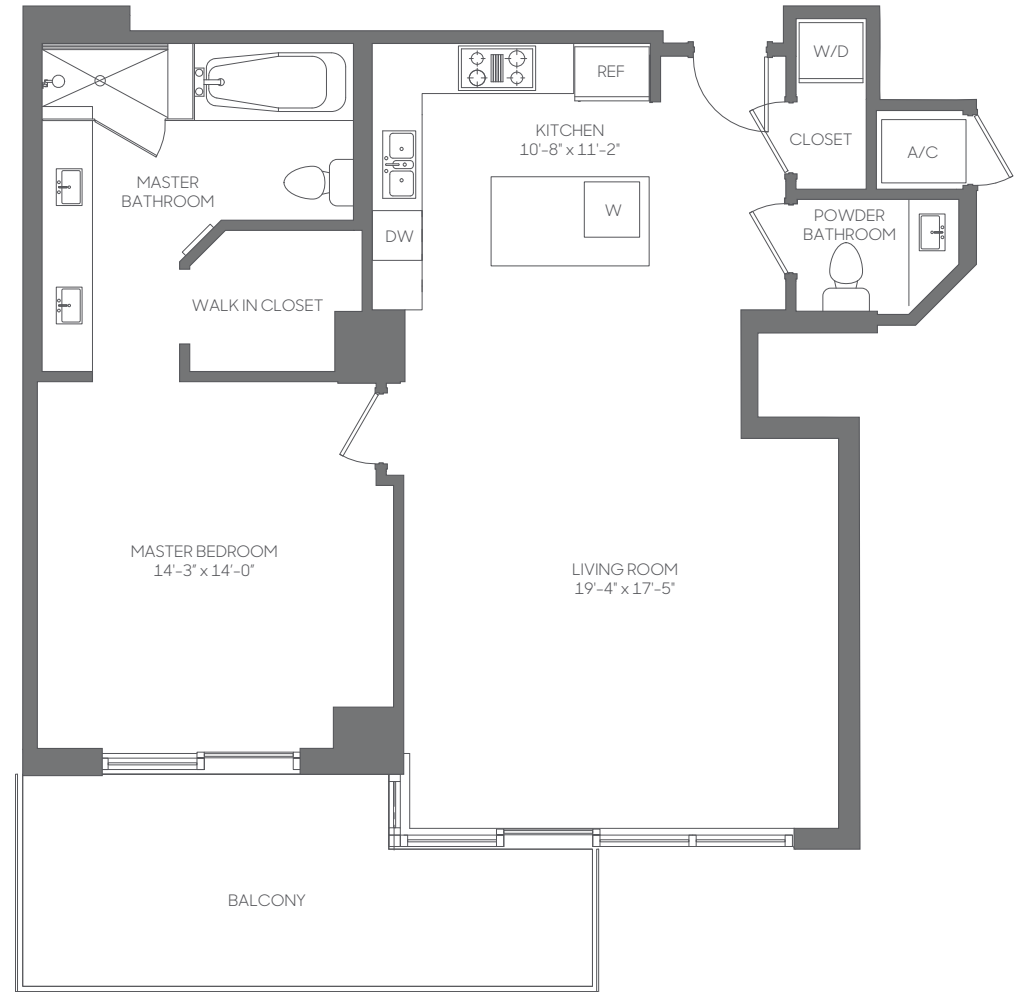
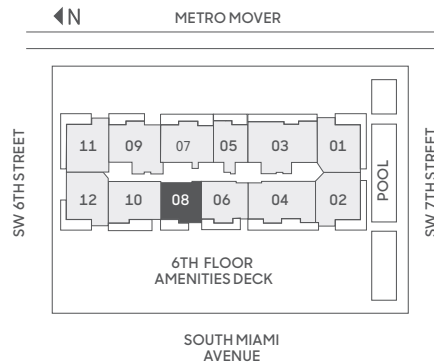
Stated dimensions are measured to the exterior boundaries of the exterior walls and the centerline of interior demising walls, including common elements such as structural walls and other interior structural components of the building, and in fact vary from the dimensions that would be determined by using the description and definition of the "Unit" set forth in the Declaration (which generally only includes the interior airspace between the perimeter walls and excludes interior structural components). For your reference, the area of the Unit, determined in accordance with those defined unit boundaries, is 1,242 square feet (levels 8-12, 14-20), 1,244 square feet (levels 21-32), and 1,247 square feet (levels 33-41). Note that measurements of rooms set forth on this floor plan are generally taken at the greatest points of each given room (as if the room were a perfect rectangle), without regard for any cutouts. Accordingly, the area of the actual room will typically be smaller than the product obtained by multiplying the stated length times width. All dimensions are approximate and may vary with actual construction, and all floor plans and development plans are subject to change. The size and configuration of balconies and terraces varies throughout the building. The balcony depicted above is among the larger balconies and is not reflective of the actual size or configuration of the balcony for each unit of this unit type. For the actual size and configuration of the balcony for your unit, see Exhibit "2" to the Declaration of Condominium. See legal disclaimer on back cover.



08
LINE

1 BEDROOM | 1.5 BATHROOMS FLOORS: 8-12, 14-41

RESIDENCE	1,040 sq. ft.	97 sq. mt.
BALCONY	105-219 sq. ft.	10-20 sq. mt.
TOTAL	1,145-1,259 sq. ft.	106-117 sq. mt.



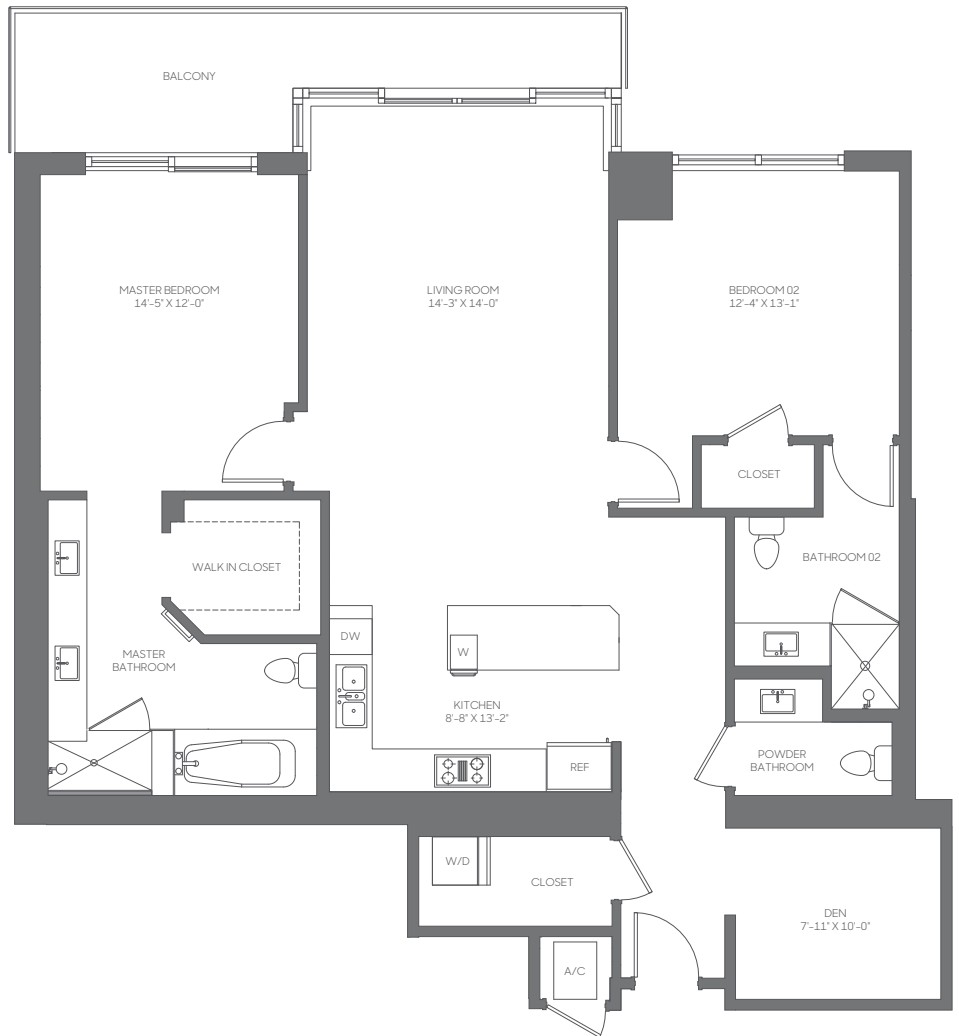
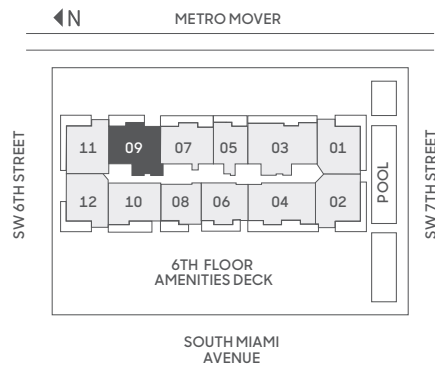
Stated dimensions are measured to the exterior boundaries of the exterior walls and the centerline of interior demising walls, including common elements such as structural walls and other interior structural components of the building, and in fact vary from the dimensions that would be determined by using the description and definition of the "Unit" set forth in the Declaration (which generally only includes the interior airspace between the perimeter walls and excludes interior structural components). For your reference, the area of the Unit, determined in accordance with those defined unit boundaries, is 975 square feet (levels 8-12, 14-20), 976 square feet (levels 21-32) and 977 square feet (levels 33-41). Note that measurements of rooms set forth on this floor plan are generally taken at the greatest points of each given room (as if the room were a perfect rectangle), without regard for any cutouts. Accordingly, the area of the actual room will typically be smaller than the product obtained by multiplying the stated length times width. All dimensions are approximate and may vary with actual construction, and all floor plans and development plans are subject to change. The size and configuration of balconies and terraces varies throughout the building. The balcony depicted above is among the larger balconies and is not reflective of the actual size or configuration of the balcony for each unit of this unit type. For the actual size and configuration of the balcony for your unit, see Exhibit "2" to the Declaration of Condominium. See legal disclaimer on back cover.



09
LINE

2 BEDROOMS | 2.5 BATHROOMS | DEN FLOORS: 8-12, 14-41

RESIDENCE (8-10)	1,500 sq. ft.	139 sq. mt.
RESIDENCE (11-12, 14-20)	1,490 sq. ft.	138 sq. mt.
RESIDENCE (21-32)	1,501 sq. ft.	139 sq. mt.
RESIDENCE (33-41)	1,526 sq. ft.	142 sq. mt.
BALCONY	84-306 sq. ft.	8-28 sq. mt.
TOTAL	1,585-1,807 sq. ft.	147-167 sq. mt.



Stated dimensions are measured to the exterior boundaries of the exterior walls and the centerline of interior demising walls, including common elements such as structural walls and other interior structural components of the building, and in fact vary from the dimensions that would be determined by using the description and definition of the "Unit" set forth in the Declaration (which generally only includes the interior airspace between the perimeter walls and excludes interior structural components). For your reference, the area of the Unit, determined in accordance with those defined unit boundaries, is 1,377 square feet (levels 8-10), 1,370 square feet (levels 11-12, 14-20), and 1,373 square feet (levels 21-32) and 1,395 (levels 33-41). Note that measurements of rooms set forth on this floor plan are generally taken at the greatest points of each given room (as if the room were a perfect rectangle), without regard for any cutouts. Accordingly, the area of the actual room will typically be smaller than the product obtained by multiplying the stated length times width. All dimensions are approximate and may vary with actual construction, and all floor plans and development plans are subject to change. The size and configuration of balconies and terraces varies throughout the building. The balcony depicted above is among the larger balconies and is not reflective of the actual size or configuration of the balcony for each unit of this unit type. For the actual size and configuration of the balcony for your unit, see Exhibit "2" to the Declaration of Condominium. See legal disclaimer on back cover.

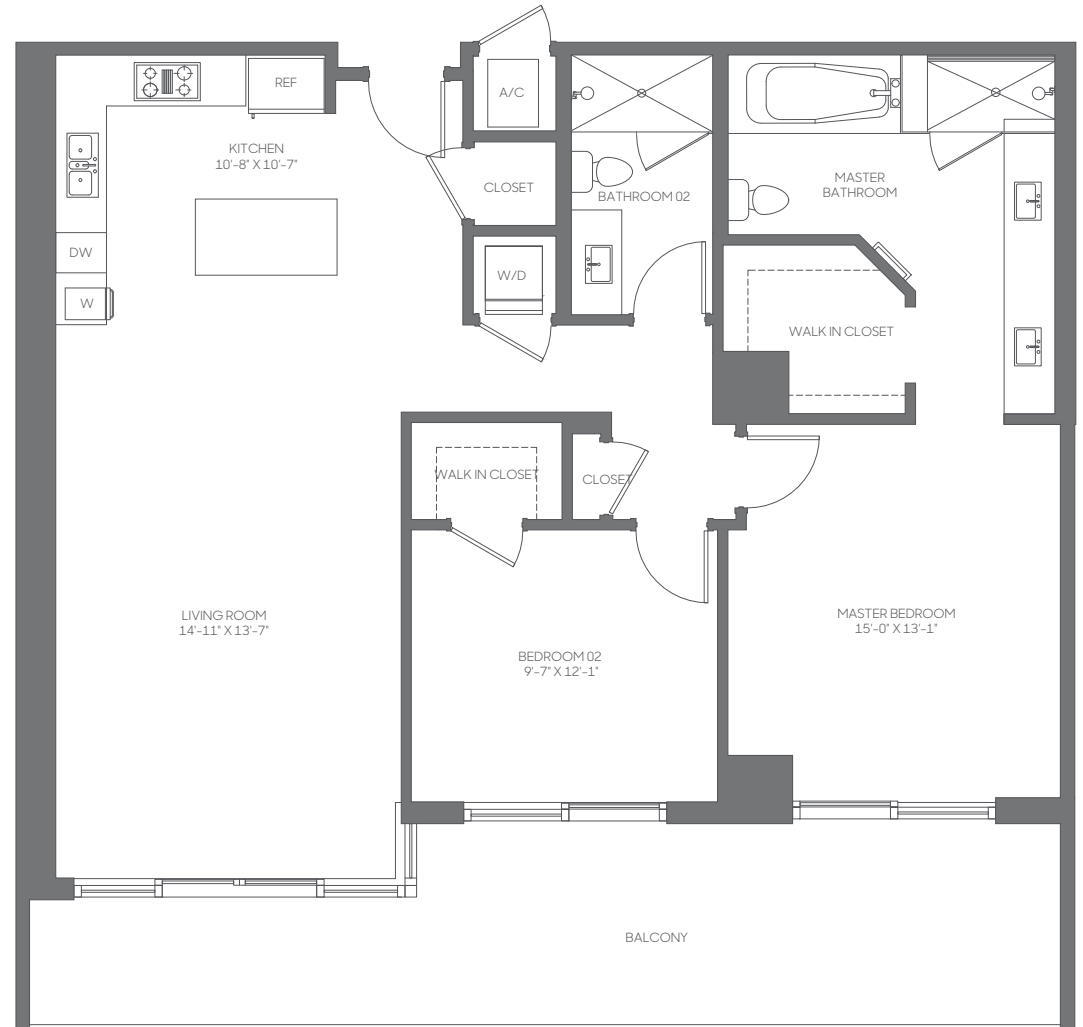
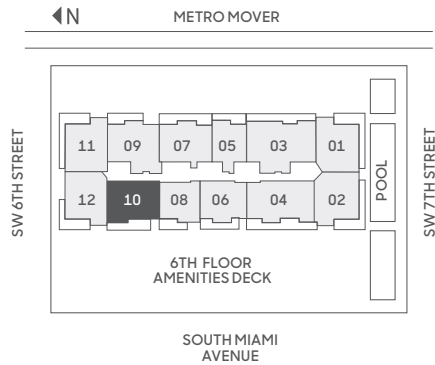


10
LINE

2 BEDROOMS | 2 BATHROOMS

FLOORS: 8-12, 14-41

RESIDENCE (8-12, 14-20)	1,307 sq. ft.	121 sq. mt.
RESIDENCE (21-32)	1,317 sq. ft.	122 sq. mt.
RESIDENCE (33-41)	1,323 sq. ft.	123 sq. mt.
BALCONY	159-303 sq. ft.	15-28 sq. mt.
TOTAL	1,476-1,610 sq. ft.	137-149 sq. mt.



Stated dimensions are measured to the exterior boundaries of the exterior walls and the centerline of interior demising walls, including common elements such as structural walls and other interior structural components of the building, and in fact vary from the dimensions that would be determined by using the description and definition of the "Unit" set forth in the Declaration (which generally only includes the interior airspace between the perimeter walls and excludes interior structural components). For your reference, the area of the Unit, determined in accordance with those defined unit boundaries, is 1,193 square feet (levels 8-12, 14-20), 1,208 square feet (levels 21-32), and 1,219 square feet (levels 33-41). Note that measurements of rooms set forth on this floor plan are generally taken at the greatest points of each given room (as if the room were a perfect rectangle), without regard for any cutouts. Accordingly, the area of the actual room will typically be smaller than the product obtained by multiplying the stated length times width. All dimensions are approximate and may vary with actual construction, and all floor plans and development plans are subject to change. The size and configuration of balconies and terraces varies throughout the building. The balcony depicted above is among the larger balconies and is not reflective of the actual size or configuration of the balcony for each unit of this unit type. For the actual size and configuration of the balcony for your unit, see Exhibit "2" to the Declaration of Condominium. See legal disclaimer on back cover.

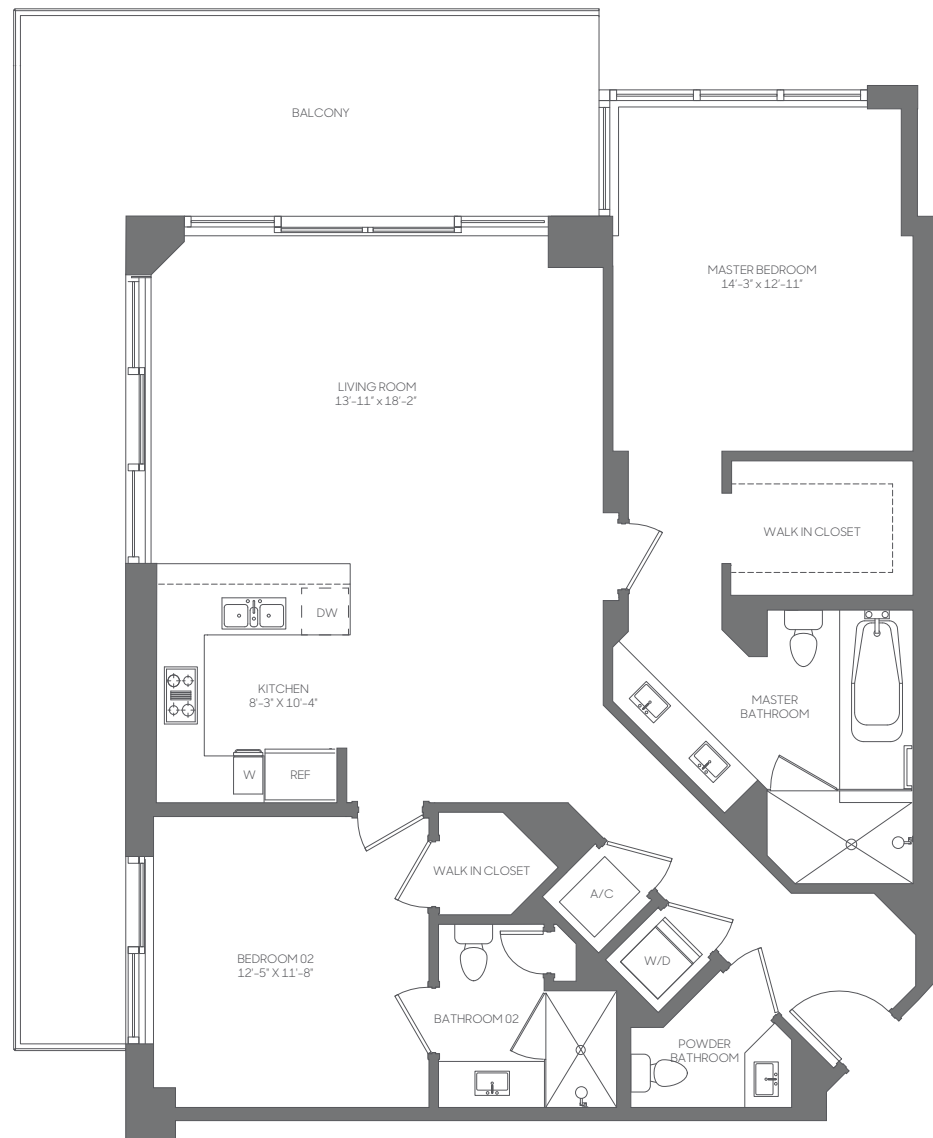
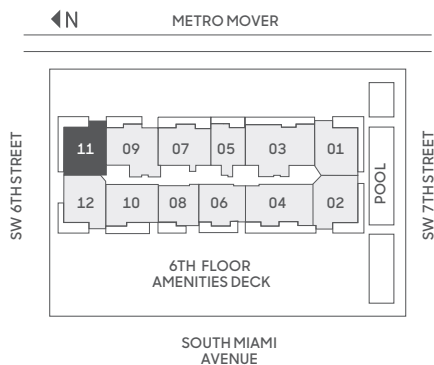


11
LINE

2 BEDROOMS | 2.5 BATHROOMS

FLOORS: 7-12, 14-36

RESIDENCE (7-12, 14-20)	1,401 sq. ft.	130 sq. mt.
RESIDENCE (21-32)	1,391 sq. ft.	129 sq. mt.
RESIDENCE (33-36)	1,386 sq. ft.	128 sq. mt.
BALCONY	280-411 sq. ft.	26-38 sq. mt.
TOTAL	1,666-1,802 sq. ft.	154-167 sq. mt.



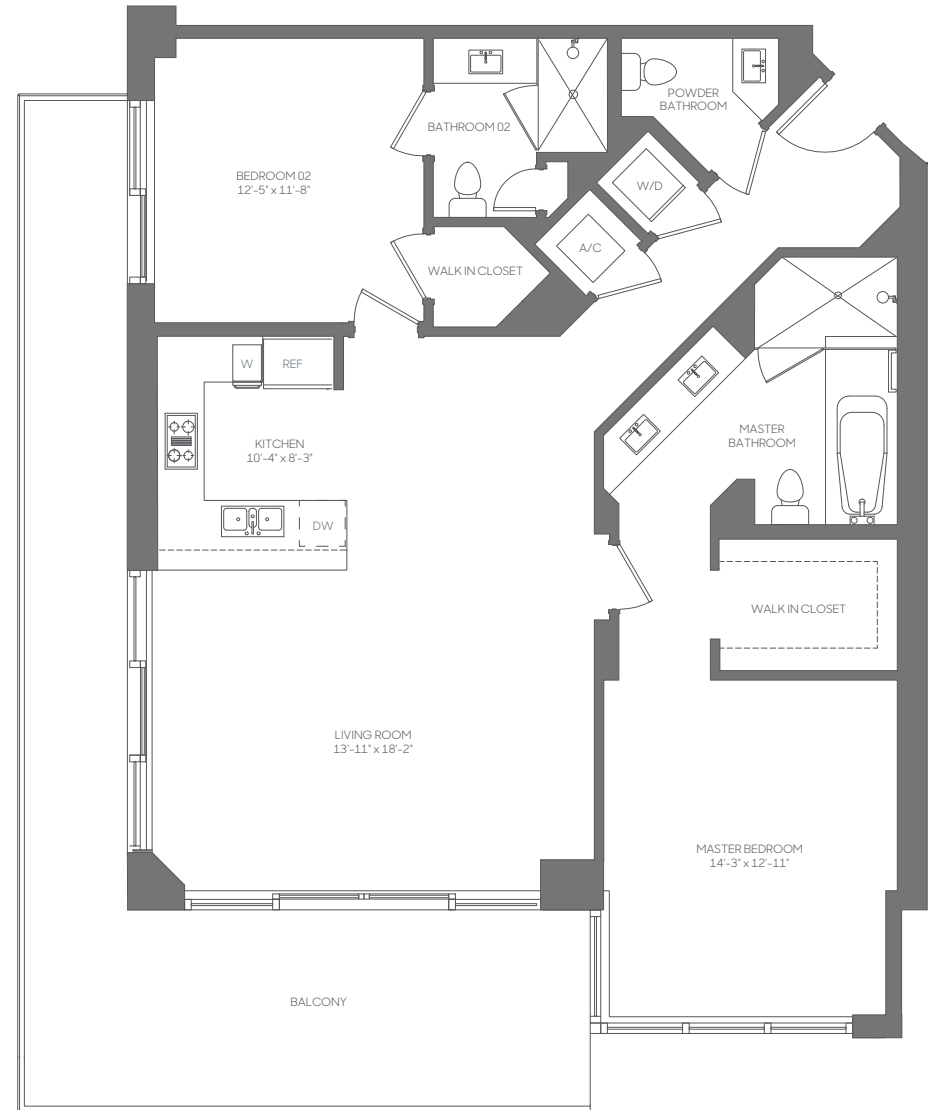
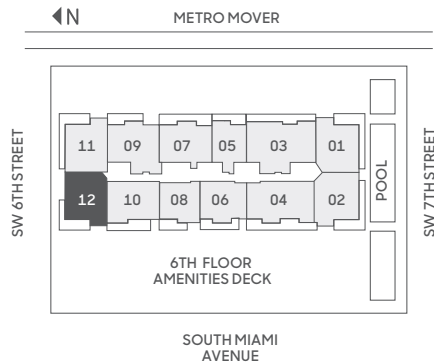
Stated dimensions are measured to the exterior boundaries of the exterior walls and the centerline of interior demising walls, including common elements such as structural walls and other interior structural components of the building, and in fact vary from the dimensions that would be determined by using the description and definition of the "Unit" set forth in the Declaration (which generally only includes the interior airspace between the perimeter walls and excludes interior structural components). For your reference, the area of the Unit, determined in accordance with those defined unit boundaries, is 1,265 square feet. Note that measurements of rooms set forth on this floor plan are generally taken at the greatest points of each given room (as if the room were a perfect rectangle), without regard for any cutouts. Accordingly, the area of the actual room will typically be smaller than the product obtained by multiplying the stated length times width. All dimensions are approximate and may vary with actual construction, and all floor plans and development plans are subject to change. The size and configuration of balconies and terraces varies throughout the building. The balcony depicted above is among the larger balconies and is not reflective of the actual size or configuration of the balcony for each unit of this unit type. For the actual size and configuration of the balcony for your unit, see Exhibit "2" to the Declaration of Condominium. See legal disclaimer on back cover.



12
LINE

2 BEDROOMS | 2.5 BATHROOMS FLOORS: 7-12, 14-36

RESIDENCE (7-12, 14-20)	1,400 sq. ft.	130 sq. mt.
RESIDENCE (21-32)	1,391 sq. ft.	129 sq. mt.
RESIDENCE (33-36)	1,385 sq. ft.	128 sq. mt.
BALCONY	280-411 sq. ft.	26-38 sq. mt.
TOTAL	1,665-1,802 sq. ft.	154-167 sq. mt.



Stated dimensions are measured to the exterior boundaries of the exterior walls and the centerline of interior demising walls, including common elements such as structural walls and other interior structural components of the building, and in fact vary from the dimensions that would be determined by using the description and definition of the "Unit" set forth in the Declaration (which generally only includes the interior airspace between the perimeter walls and excludes interior structural components). For your reference, the area of the Unit, determined in accordance with those defined unit boundaries, is 1,265 square feet. Note that measurements of rooms set forth on this floor plan are generally taken at the greatest points of each given room (as if the room were a perfect rectangle), without regard for any cutouts. Accordingly, the area of the actual room will typically be smaller than the product obtained by multiplying the stated length times width. All dimensions are approximate and may vary with actual construction, and all floor plans and development plans are subject to change. The size and configuration of balconies and terraces varies throughout the building. The balcony depicted above is among the larger balconies and is not reflective of the actual size or configuration of the balcony for each unit of this unit type. For the actual size and configuration of the balcony for your unit, see Exhibit "2" to the Declaration of Condominium. See legal disclaimer on back cover.

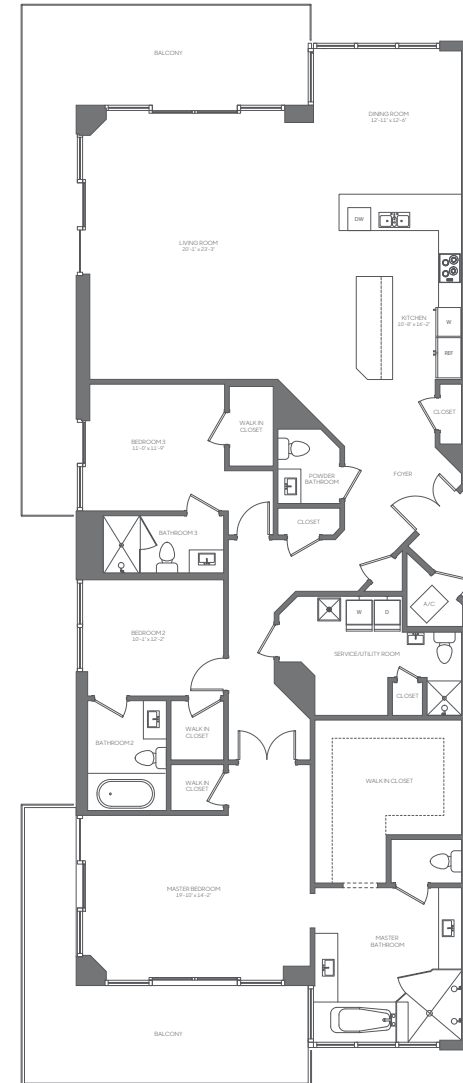
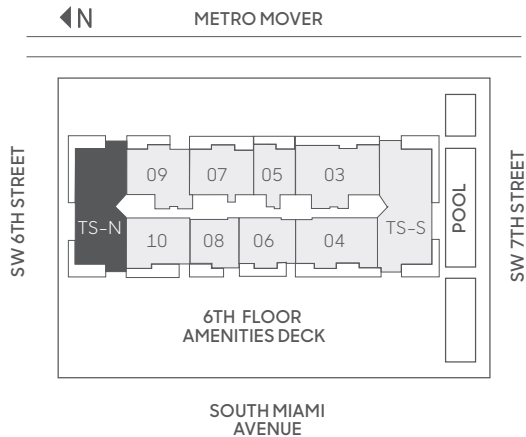


N
TOWER
SUITE

3 BEDROOMS | 4.5 BATHROOMS
DINING | UTILITY

FLOORS: 37-41

RESIDENCE	2,740 sq. ft.	255 sq. mt.
BALCONY	650 sq. ft.	60 sq. mt.
TOTAL	3,390 sq. ft.	315 sq. mt.



Stated dimensions are measured to the exterior boundaries of the exterior walls and the centerline of interior demising walls, including common elements such as structural walls and other interior structural components of the building, and in fact vary from the dimensions that would be determined by using the description and definition of the "Unit" set forth in the Declaration (which generally only includes the interior airspace between the perimeter walls and excludes interior structural components). For your reference, the area of the Unit, determined in accordance with those defined unit boundaries, is 2,526 square feet. Note that measurements of rooms set forth on this floor plan are generally taken at the greatest points of each given room (as if the room were a perfect rectangle), without regard for any cutouts. Accordingly, the area of the actual room will typically be smaller than the product obtained by multiplying the stated length times width. All dimensions are approximate and may vary with actual construction, and all floor plans and development plans are subject to change. The size and configuration of balconies and terraces varies throughout the building. The balcony depicted above is among the larger balconies and is not reflective of the actual size or configuration of the balcony for each unit of this unit type. For the actual size and configuration of the balcony for your unit, see Exhibit "2" to the Declaration of Condominium. See legal disclaimer on back cover.

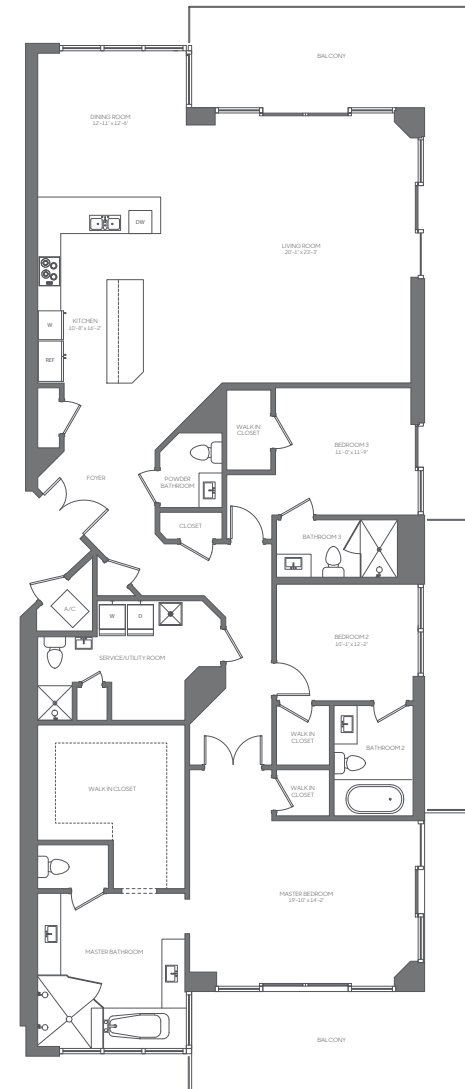
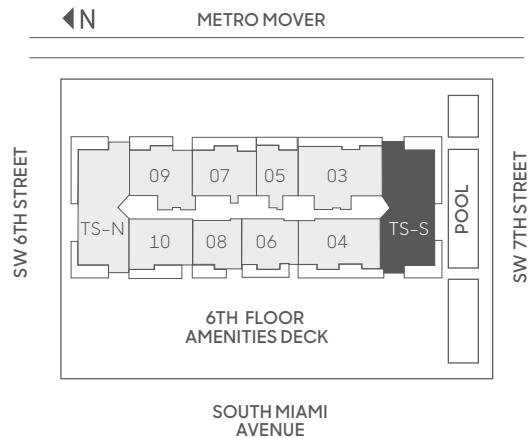


S
TOWER
SUITE

3 BEDROOMS | 4.5 BATHROOMS DINING | UTILITY

FLOORS: 37-41

RESIDENCE	2,740 sq. ft.	255 sq. mt.
BALCONY	650 sq. ft.	60 sq. mt.
TOTAL	3,390 sq. ft.	315 sq. mt.



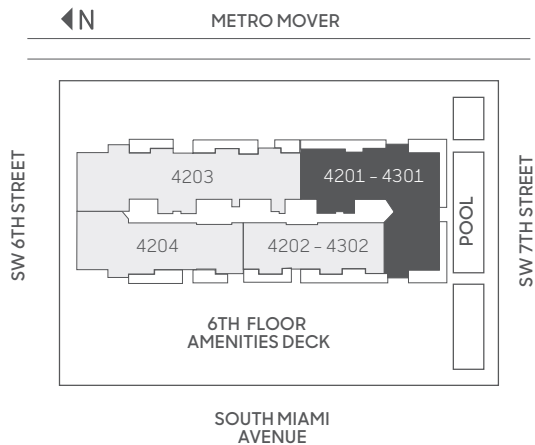
Stated dimensions are measured to the exterior boundaries of the exterior walls and the centerline of interior demising walls, including common elements such as structural walls and other interior structural components of the building, and in fact vary from the dimensions that would be determined by using the description and definition of the "Unit" set forth in the Declaration (which generally only includes the interior airspace between the perimeter walls and excludes interior structural components). For your reference, the area of the Unit, determined in accordance with those defined unit boundaries, is 2,532 square feet. Note that measurements of rooms set forth on this floor plan are generally taken at the greatest points of each given room (as if the room were a perfect rectangle), without regard for any cutouts. Accordingly, the area of the actual room will typically be smaller than the product obtained by multiplying the stated length times width. All dimensions are approximate and may vary with actual construction, and all floor plans and development plans are subject to change. The size and configuration of balconies and terraces varies throughout the building. The balcony depicted above is among the larger balconies and is not reflective of the actual size or configuration of the balcony for each unit of this unit type. For the actual size and configuration of the balcony for your unit, see Exhibit "2" to the Declaration of Condominium. See legal disclaimer on back cover.



4201
4301
PENTHOUSE

4 BEDROOMS | 4.5 BATHROOMS
DINING | UTILITY | FAMILY
FLOORS: 42-43

RESIDENCE	4,385 sq. ft.	407 sq. mt.
BALCONY	917 sq. ft.	85 sq. mt.
TOTAL	5,302 sq. ft.	492 sq. mt.



Stated dimensions are measured to the exterior boundaries of the exterior walls and the centerline of interior demising walls, including common elements such as structural walls and other interior structural components of the building, and in fact vary from the dimensions that would be determined by using the description and definition of the "Unit" set forth in the Declaration (which generally only includes the interior airspace between the perimeter walls and excludes interior structural components). For your reference, the area of the Unit, determined in accordance with those defined unit boundaries, is 4,066 square feet. Note that measurements of rooms set forth on this floor plan are generally taken at the greatest points of each given room (as if the room were a perfect rectangle), without regard for any cutouts. Accordingly, the area of the actual room will typically be smaller than the product obtained by multiplying the stated length times width. All dimensions are approximate and may vary with actual construction, and all floor plans and development plans are subject to change. The size and configuration of balconies and terraces varies throughout the building. The balcony depicted above is among the larger balconies and is not reflective of the actual size or configuration of the balcony for each unit of this unit type. For the actual size and configuration of the balcony for your unit, see Exhibit "2" to the Declaration of Condominium. See legal disclaimer on back cover.

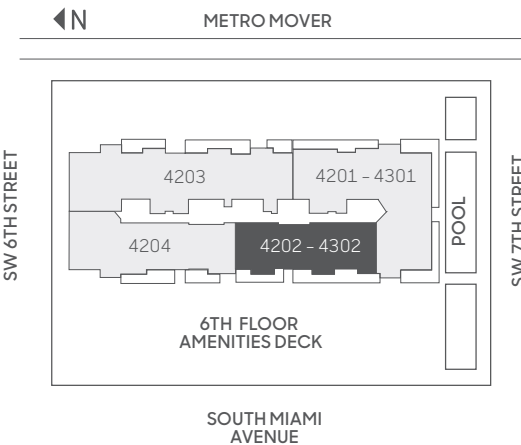


4202
4302
PENTHOUSE

3 BEDROOMS | 4.5 BATHROOMS
DINING | UTILITY

FLOOR: 42-43

RESIDENCE	2,684 sq. ft.	249 sq. mt.
BALCONY	553 sq. ft.	51 sq. mt.
TOTAL	3,237 sq. ft.	300 sq. mt.



Stated dimensions are measured to the exterior boundaries of the exterior walls and the centerline of interior demising walls, including common elements such as structural walls and other interior structural components of the building, and in fact vary from the dimensions that would be determined by using the description and definition of the "Unit" set forth in the Declaration (which generally only includes the interior airspace between the perimeter walls and excludes interior structural components). For your reference, the area of the Unit, determined in accordance with those defined unit boundaries, is 2,505 square feet. Note that measurements of rooms set forth on this floor plan are generally taken at the greatest points of each given room (as if the room were a perfect rectangle), without regard for any cutouts. Accordingly, the area of the actual room will typically be smaller than the product obtained by multiplying the stated length times width. All dimensions are approximate and may vary with actual construction, and all floor plans and development plans are subject to change. The size and configuration of balconies and terraces varies throughout the building. The balcony depicted above is among the larger balconies and is not reflective of the actual size or configuration of the balcony for each unit of this unit type. For the actual size and configuration of the balcony for your unit, see Exhibit "2" to the Declaration of Condominium. See legal disclaimer on back cover.

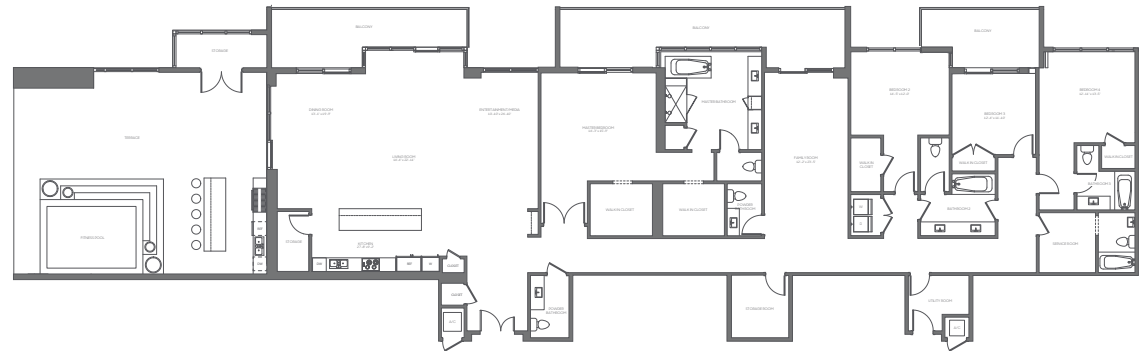
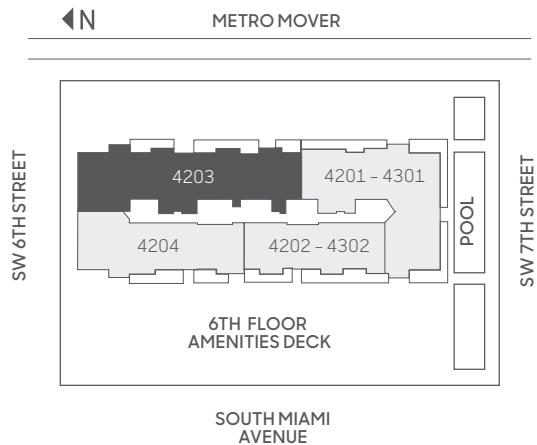


4203
PENTHOUSE

4 BEDROOMS | 3 BATHROOMS | 2 POWDER
DINING | UTILITY | FAMILY | TERRACE

FLOOR: 42

RESIDENCE	4,346 sq. ft.	404 sq. mt.
BALCONY	632 sq. ft.	59 sq. mt.
TERRACE	1,191 sq. ft.	111 sq. mt.
TOTAL	6,169 sq. ft.	574 sq. mt.



Stated dimensions are measured to the exterior boundaries of the exterior walls and the centerline of interior demising walls, including common elements such as structural walls and other interior structural components of the building, and in fact vary from the dimensions that would be determined by using the description and definition of the "Unit" set forth in the Declaration (which generally only includes the interior airspace between the perimeter walls and excludes interior structural components). For your reference, the area of the Unit, determined in accordance with those defined unit boundaries, is 4,105 square feet. Note that measurements of rooms set forth on this floor plan are generally taken at the greatest points of each given room (as if the room were a perfect rectangle), without regard for any cutouts. Accordingly, the area of the actual room will typically be smaller than the product obtained by multiplying the stated length times width. All dimensions are approximate and may vary with actual construction, and all floor plans and development plans are subject to change. The size and configuration of balconies and terraces varies throughout the building. The balcony depicted above is among the larger balconies and is not reflective of the actual size or configuration of the balcony for each unit of this unit type. For the actual size and configuration of the balcony for your unit, see Exhibit "2" to the Declaration of Condominium. See legal disclaimer on back cover.

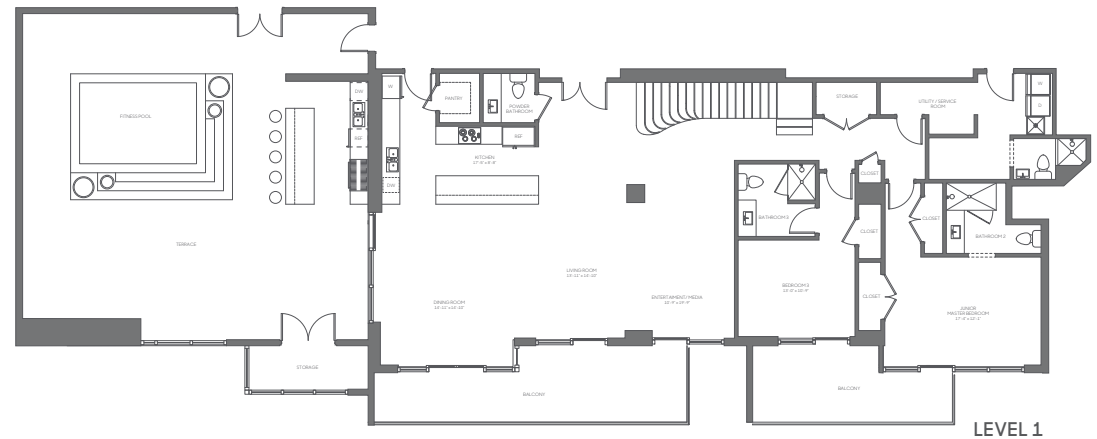
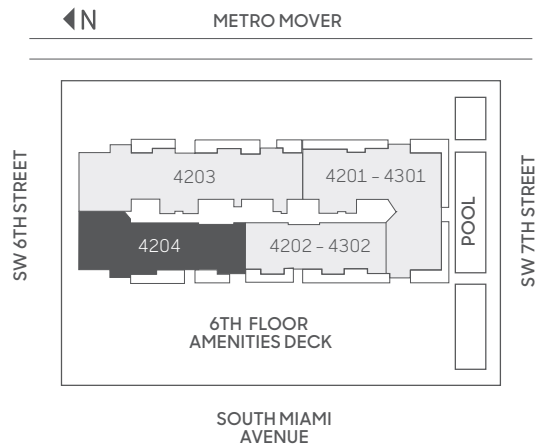
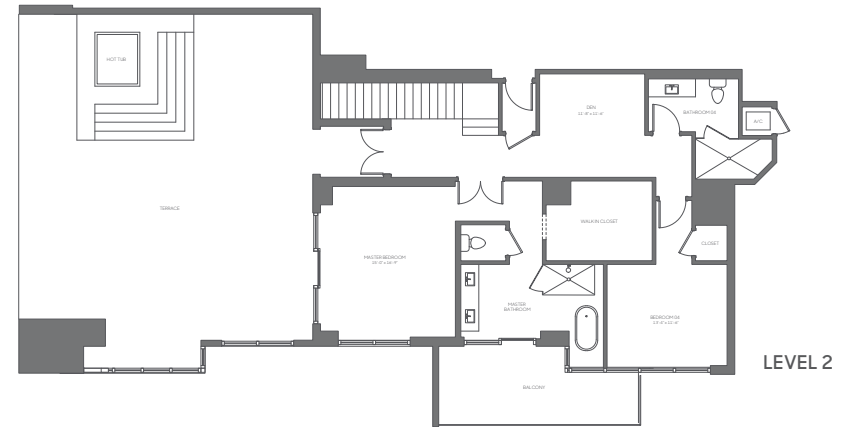


4204 PENTHOUSE

4 BEDROOMS | 5.5 BATHROOMS
DINING | DEN | UTILITY | TERRACE

FLOOR: 42 & 43

RESIDENCE	3,933 sq. ft.	365 sq. mt.
BALCONY	577 sq. ft.	54 sq. mt.
TERRACE	2,814 sq. ft.	261 sq. mt.
TOTAL	7,324 sq. ft.	680 sq. mt.



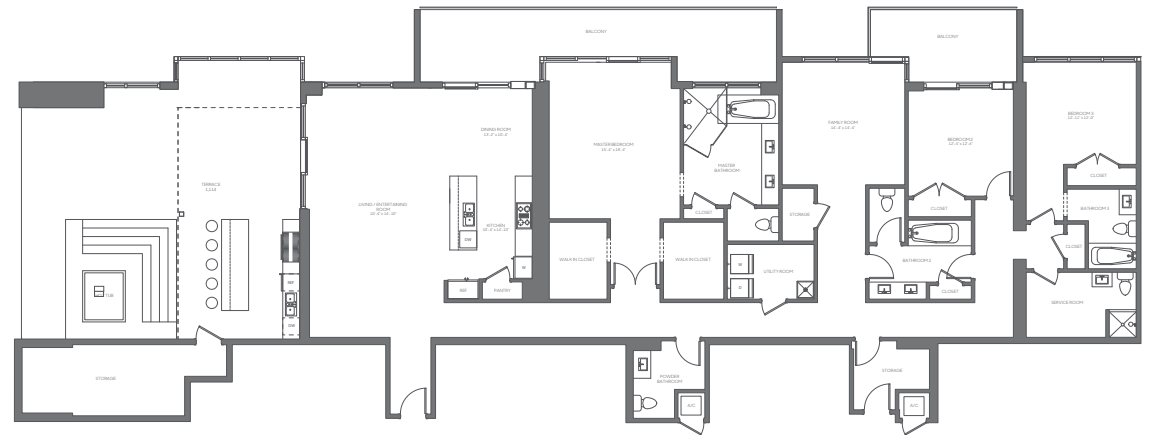
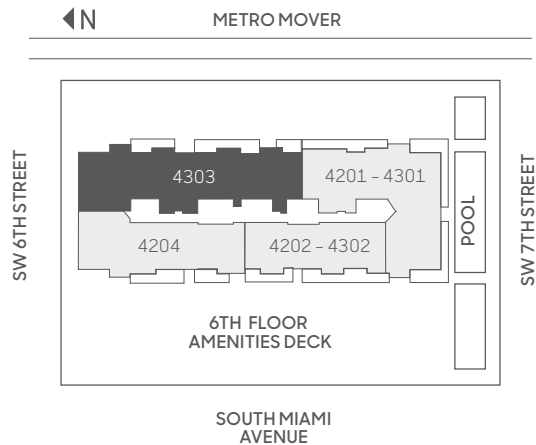
Stated dimensions are measured to the exterior boundaries of the exterior walls and the centerline of interior demising walls, including common elements such as structural walls and other interior structural components of the building, and in fact vary from the dimensions that would be determined by using the description and definition of the "Unit" set forth in the Declaration (which generally only includes the interior airspace between the perimeter walls and excludes interior structural components). For your reference, the area of the Unit, determined in accordance with those defined unit boundaries, is 3,488 square feet. Note that measurements of rooms set forth on this floor plan are generally taken at the greatest points of each given room (as if the room were a perfect rectangle), without regard for any cutouts. Accordingly, the area of the actual room will typically be smaller than the product obtained by multiplying the stated length times width. All dimensions are approximate and may vary with actual construction, and all floor plans and development plans are subject to change. The size and configuration of balconies and terraces varies throughout the building. The balcony depicted above is among the larger balconies and is not reflective of the actual size or configuration of the balcony for each unit of this unit type. For the actual size and configuration of the balcony for your unit, see Exhibit "2" to the Declaration of Condominium. See legal disclaimer on back cover.



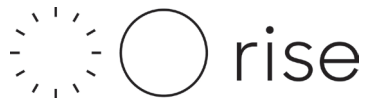
4303
PENTHOUSE

3 BEDROOMS | 4.5 BATHROOMS
DINING | FAMILY | UTILITY | TERRACE
FLOOR: 43

RESIDENCE	3,335 sq. ft.	310 sq. mt.
BALCONY	438 sq. ft.	41 sq. mt.
TERRACE	1,114 sq. ft.	103 sq. mt.
TOTAL	4,887 sq. ft.	454 sq. mt.



Stated dimensions are measured to the exterior boundaries of the exterior walls and the centerline of interior demising walls, including common elements such as structural walls and other interior structural components of the building, and in fact vary from the dimensions that would be determined by using the description and definition of the "Unit" set forth in the Declaration (which generally only includes the interior airspace between the perimeter walls and excludes interior structural components). For your reference, the area of the Unit, determined in accordance with those defined unit boundaries, is 3,092 square feet. Note that measurements of rooms set forth on this floor plan are generally taken at the greatest points of each given room (as if the room were a perfect rectangle), without regard for any cutouts. Accordingly, the area of the actual room will typically be smaller than the product obtained by multiplying the stated length times width. All dimensions are approximate and may vary with actual construction, and all floor plans and development plans are subject to change. The size and configuration of balconies and terraces varies throughout the building. The balcony depicted above is among the larger balconies and is not reflective of the actual size or configuration of the balcony for each unit of this unit type. For the actual size and configuration of the balcony for your unit, see Exhibit "2" to the Declaration of Condominium. See legal disclaimer on back cover.

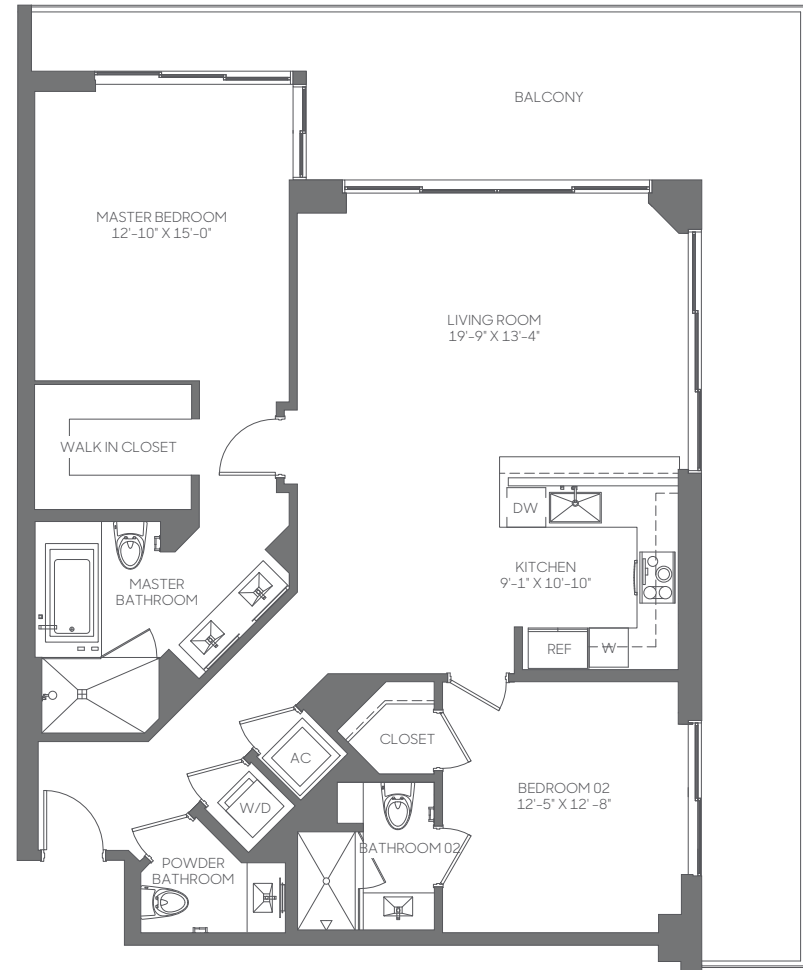
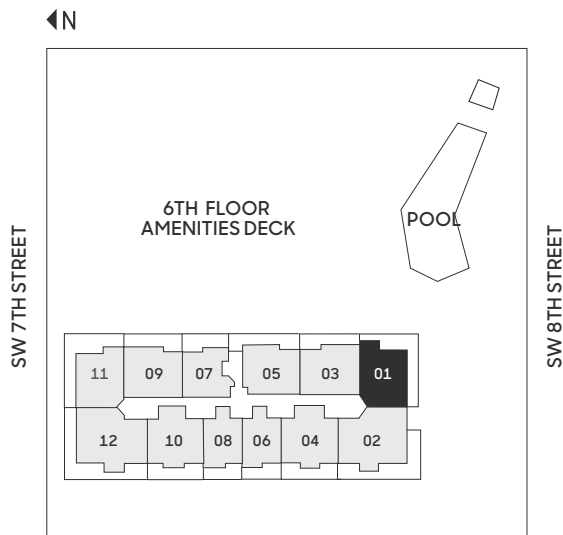


01
LINE

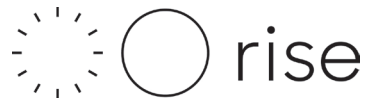
2 BEDROOMS | 2.5 BATHROOMS

FLOORS: 12, 14-36

RESIDENCE (12, 14-21)	1,389 sq. ft.	129 sq. mt.
RESIDENCE (22-33)	1,384 sq. ft.	129 sq. mt.
RESIDENCE (34-36)	1,378 sq. ft.	128 sq. mt.
BALCONY	292-452 sq. ft.	27-42 sq. mt.
TOTAL	1,681-1,836 sq. ft.	156-170 sq. mt.



Stated dimensions are measured to the exterior boundaries of the exterior walls and the centerline of interior demising walls, including common elements such as structural walls and other interior structural components of the building, and in fact vary from the dimensions that would be determined by using the description and definition of the "Unit" set forth in the Declaration (which generally only includes the interior airspace between the perimeter walls and excludes interior structural components). For your reference, the area of the Unit, determined in accordance with those defined unit boundaries, is 1,270 square feet (levels 12, 14-33) and 1,267 square feet (levels 34-36). Note that measurements of rooms set forth on this floor plan are generally taken at the greatest points of each given room (as if the room were a perfect rectangle), without regard for any cutouts. Accordingly, the area of the actual room will typically be smaller than the product obtained by multiplying the stated length times width. All dimensions are approximate and may vary with actual construction, and all floor plans and development plans are subject to change. The size and configuration of balconies and terraces varies throughout the building. The balcony depicted above is among the larger balconies and is not reflective of the actual size or configuration of the balcony for each unit of this unit type. For the actual size and configuration of the balcony for your unit, see Exhibit "2" to the Declaration of Condominium. See legal disclaimer on back cover.

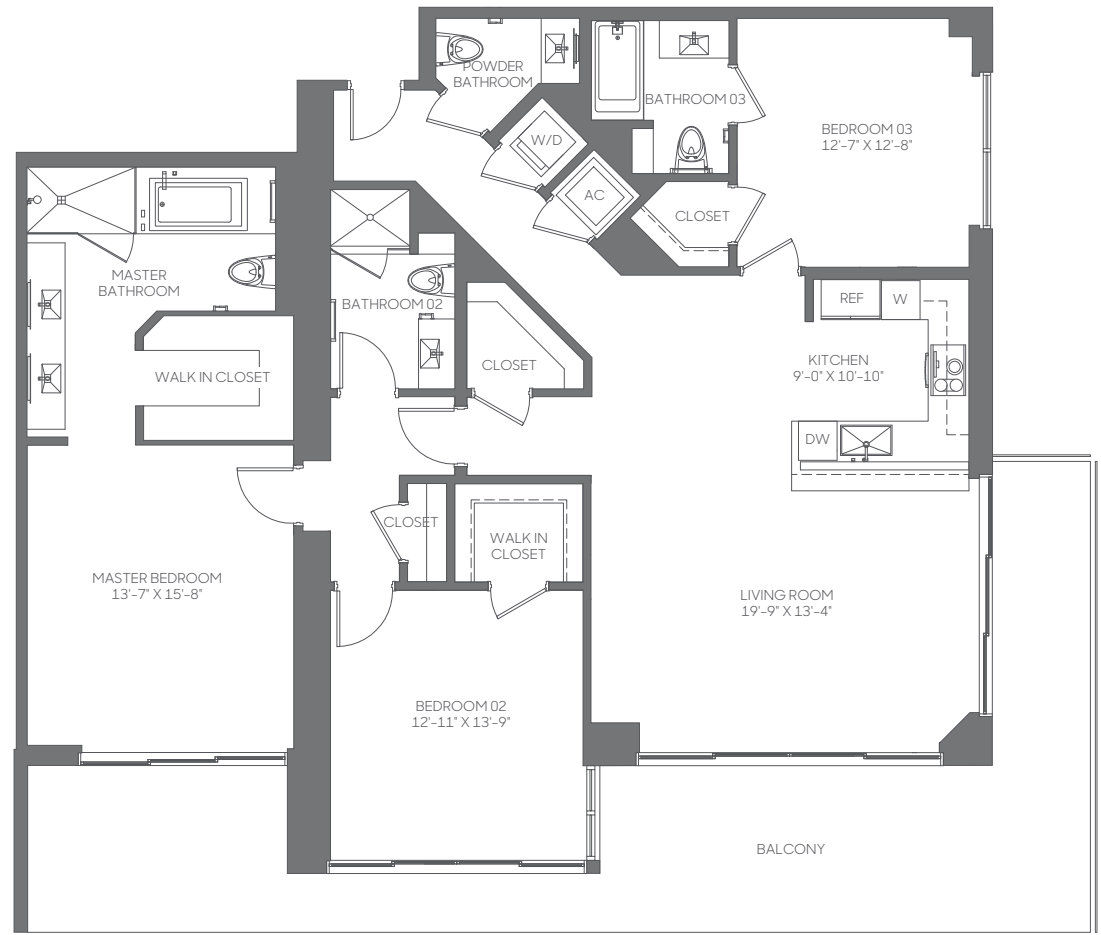
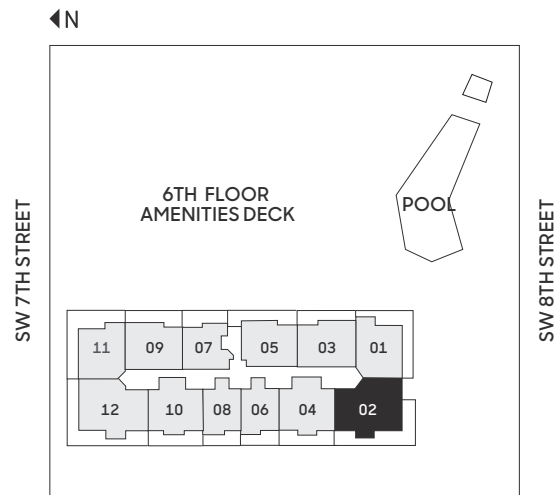


02
LINE

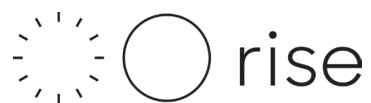
3 BEDROOMS | 3.5 BATHROOMS

FLOORS: 12, 14-36

RESIDENCE (12, 14-21)	1,850 sq. ft.	172 sq. mt.
RESIDENCE (22-33)	1,853 sq. ft.	172 sq. mt.
RESIDENCE (34-36)	1,852 sq. ft.	172 sq. mt.
BALCONY	446-450 sq. ft.	41-42 sq. mt.
TOTAL	2,296-2,303 sq. ft.	213-214 sq. mt.



Stated dimensions are measured to the exterior boundaries of the exterior walls and the centerline of interior demising walls, including common elements such as structural walls and other interior structural components of the building, and in fact vary from the dimensions that would be determined by using the description and definition of the "Unit" set forth in the Declaration (which generally only includes the interior airspace between the perimeter walls and excludes interior structural components). For your reference, the area of the Unit, determined in accordance with those defined unit boundaries, is 1,655 square feet (levels 12, 14-21), 1,676 square feet (levels 22-33) and 1,691 square feet (levels 34-36). Note that measurements of rooms set forth on this floor plan are generally taken at the greatest points of each given room (as if the room were a perfect rectangle), without regard for any cutouts. Accordingly, the area of the actual room will typically be smaller than the product obtained by multiplying the stated length times width. All dimensions are approximate and may vary with actual construction, and all floor plans and development plans are subject to change. The size and configuration of balconies and terraces varies throughout the building. The balcony depicted above is among the larger balconies and is not reflective of the actual size or configuration of the balcony for each unit of this unit type. For the actual size and configuration of the balcony for your unit, see Exhibit "2" to the Declaration of Condominium. See legal disclaimer on back cover.

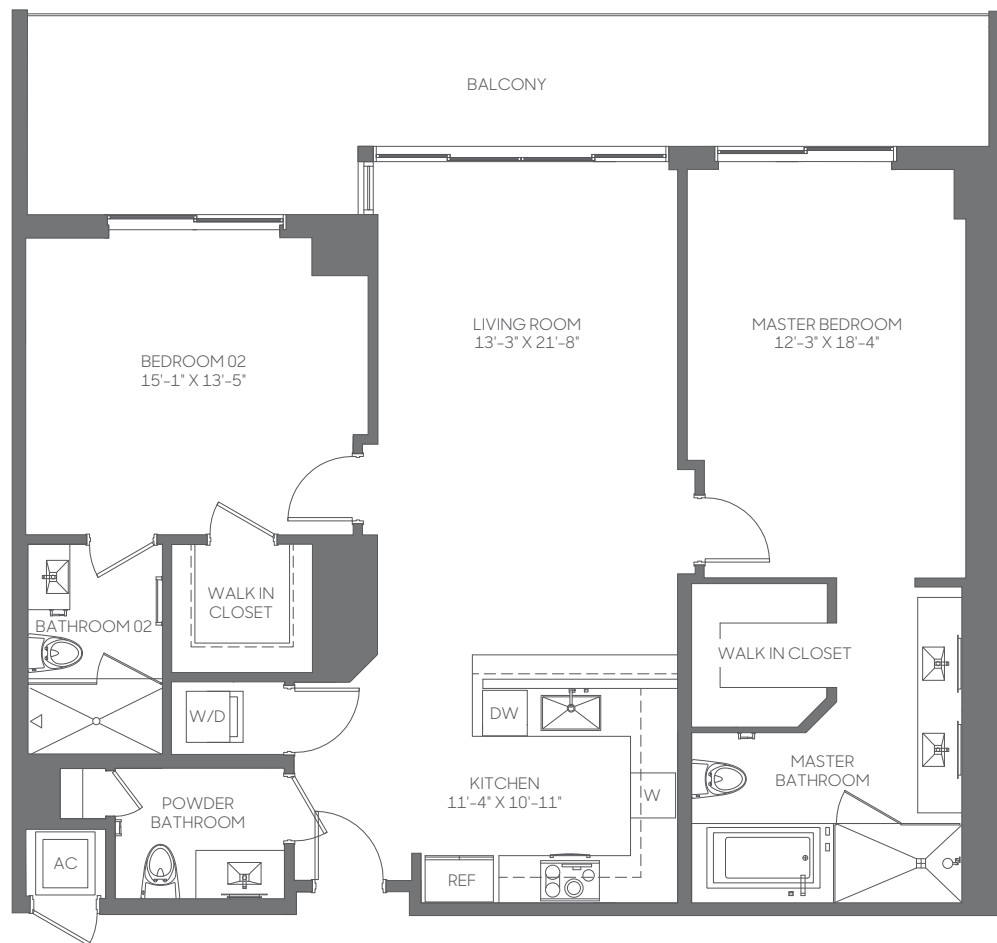
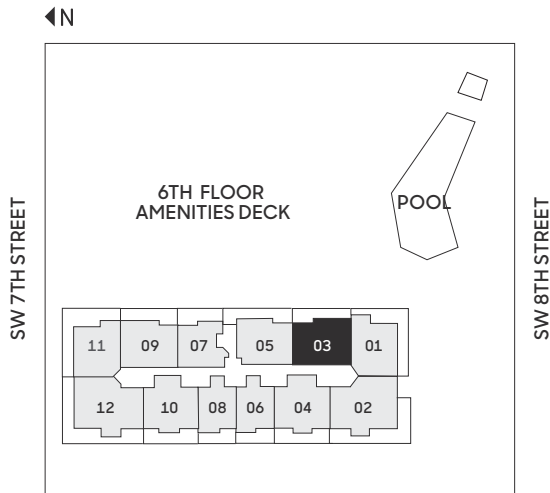


03
LINE

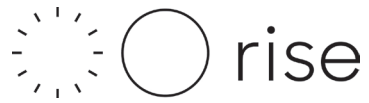
2 BEDROOMS | 2.5 BATHROOMS

FLOORS: 10, 12, 14-41

RESIDENCE (10)	1,373 sq. ft.	128 sq. mt.
RESIDENCE (12, 14-21)	1,371 sq. ft.	127 sq. mt.
RESIDENCE (22-33)	1,376 sq. ft.	128 sq. mt.
RESIDENCE (34-41)	1,385 sq. ft.	129 sq. mt.
BALCONY	85-276 sq. ft.	8-26 sq. mt.
TOTAL	1,462-1,652 sq. ft.	135-153 sq. mt.



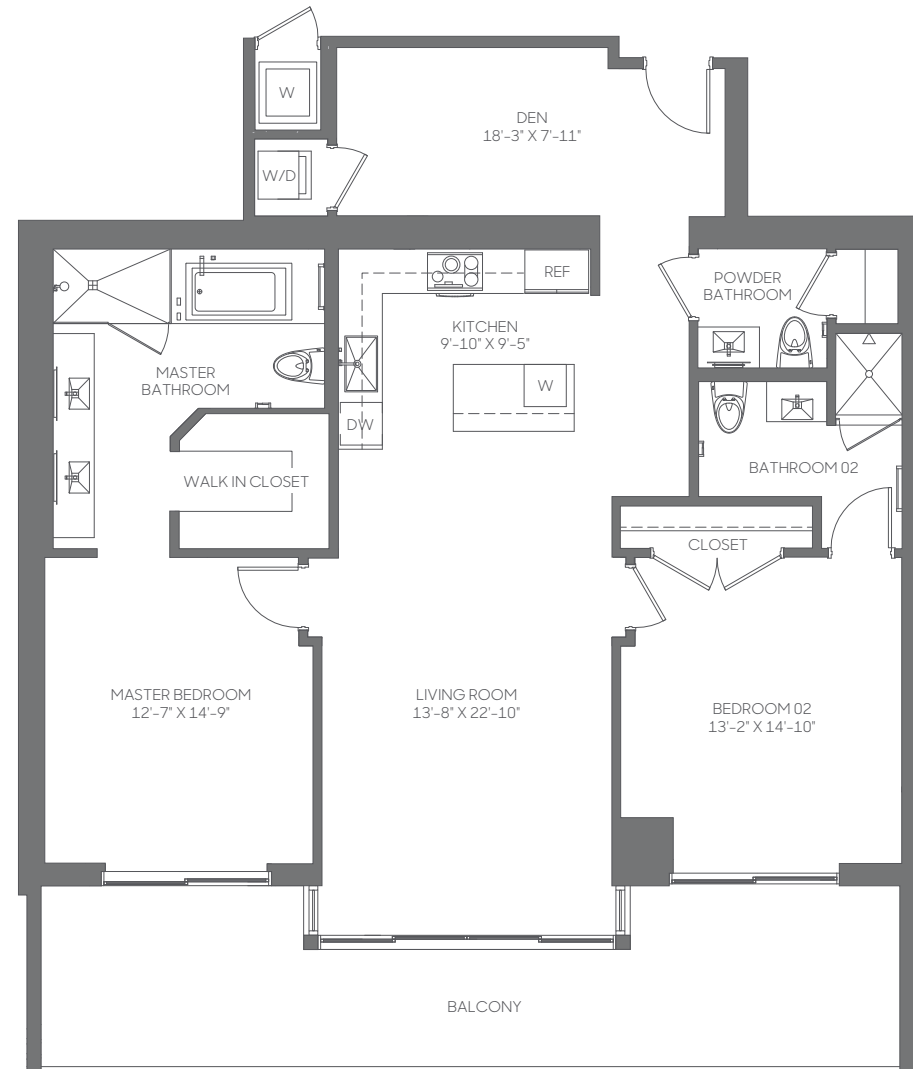
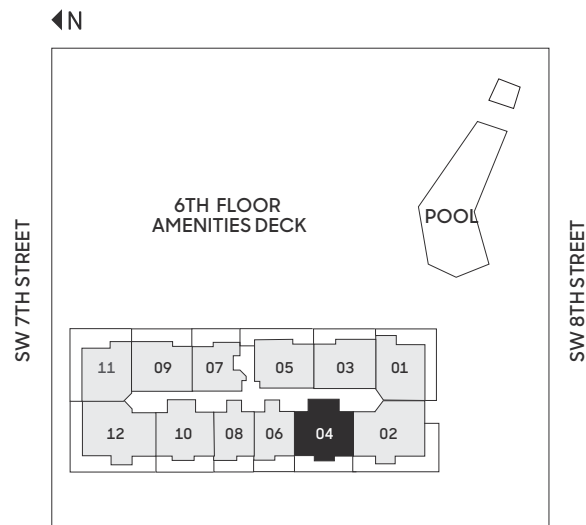
Stated dimensions are measured to the exterior boundaries of the exterior walls and the centerline of interior demising walls, including common elements such as structural walls and other interior structural components of the building, and in fact vary from the dimensions that would be determined by using the description and definition of the "Unit" set forth in the Declaration (which generally only includes the interior airspace between the perimeter walls and excludes interior structural components). For your reference, the area of the Unit, determined in accordance with those defined unit boundaries, is 1,261 square feet (levels 10, 12, 14-21), 1,281 square feet (levels 22-33) and 1,276 square feet (levels 34-41). Note that measurements of rooms set forth on this floor plan are generally taken at the greatest points of each given room (as if the room were a perfect rectangle), without regard for any cutouts. Accordingly, the area of the actual room will typically be smaller than the product obtained by multiplying the stated length times width. All dimensions are approximate and may vary with actual construction, and all floor plans and development plans are subject to change. The size and configuration of balconies and terraces varies throughout the building. The balcony depicted above is among the larger balconies and is not reflective of the actual size or configuration of the balcony for each unit of this unit type. For the actual size and configuration of the balcony for your unit, see Exhibit "2" to the Declaration of Condominium. See legal disclaimer on back cover.



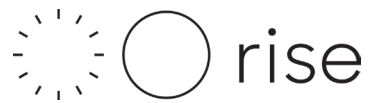
04
LINE

2 BEDROOMS | 2.5 BATHROOMS | DEN FLOORS: 12, 14-41

RESIDENCE (12, 14-21)	1,519 sq. ft.	141 sq. mt.
RESIDENCE (22-33)	1,520 sq. ft.	141 sq. mt.
RESIDENCE (34-41)	1,528 sq. ft.	142 sq. mt.
BALCONY	84-297 sq. ft.	8-28 sq. mt.
TOTAL	1,467-1,825 sq. ft.	136-169 sq. mt.



Stated dimensions are measured to the exterior boundaries of the exterior walls and the centerline of interior demising walls, including common elements such as structural walls and other interior structural components of the building, and in fact vary from the dimensions that would be determined by using the description and definition of the "Unit" set forth in the Declaration (which generally only includes the interior airspace between the perimeter walls and excludes interior structural components). For your reference, the area of the Unit, determined in accordance with those defined unit boundaries, is 1,383 square feet (levels 12, 14-21), 1,400 square feet (levels 22-33), and 1,407 square feet (levels 34-41). Note that measurements of rooms set forth on this floor plan are generally taken at the greatest points of each given room (as if the room were a perfect rectangle), without regard for any cutouts. Accordingly, the area of the actual room will typically be smaller than the product obtained by multiplying the stated length times width. All dimensions are approximate and may vary with actual construction, and all floor plans and development plans are subject to change. The size and configuration of balconies and terraces varies throughout the building. The balcony depicted above is among the larger balconies and is not reflective of the actual size or configuration of the balcony for each unit of this unit type. For the actual size and configuration of the balcony for your unit, see Exhibit "2" to the Declaration of Condominium. See legal disclaimer on back cover.

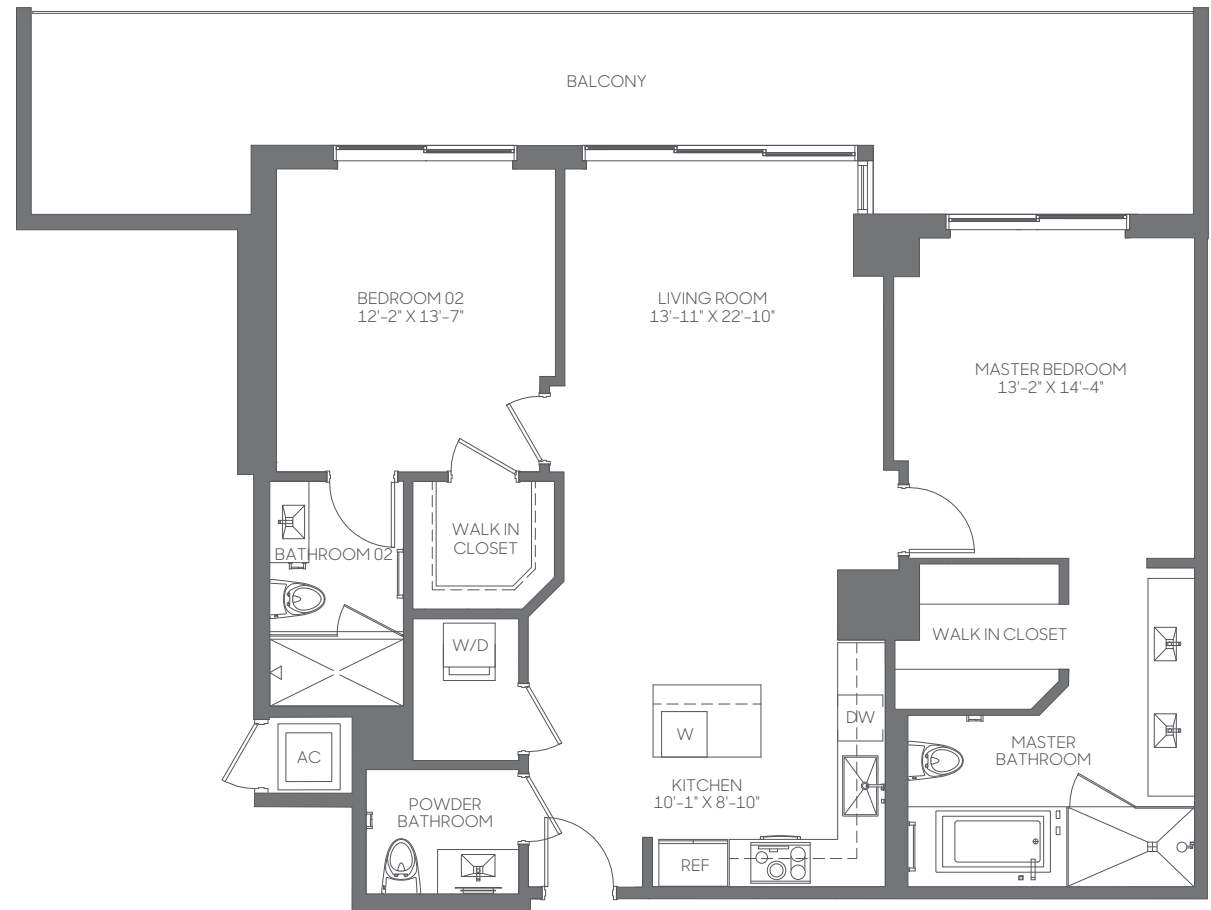
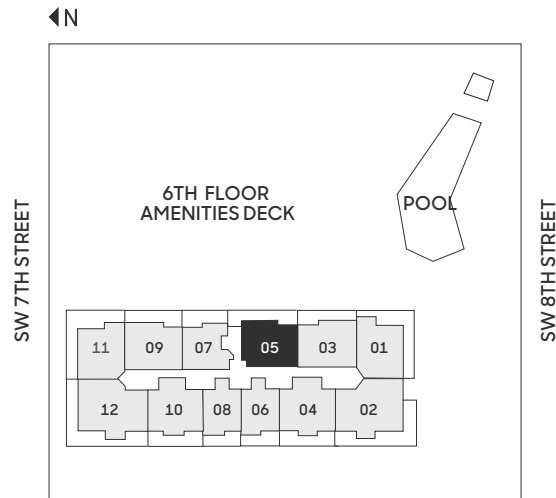


05
LINE

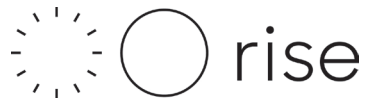
2 BEDROOMS | 2.5 BATHROOMS

FLOORS: 9-12, 14-41

RESIDENCE (9-12, 14-21)	1,276 sq. ft.	119 sq. mt.
RESIDENCE (22-33)	1,275 sq. ft.	118 sq. mt.
RESIDENCE (34-41)	1,281 sq. ft.	119 sq. mt.
BALCONY	149-349 sq. ft.	14-32 sq. mt.
TOTAL	1,424-1,625 sq. ft.	132-150 sq. mt.



Stated dimensions are measured to the exterior boundaries of the exterior walls and the centerline of interior demising walls, including common elements such as structural walls and other interior structural components of the building, and in fact vary from the dimensions that would be determined by using the description and definition of the "Unit" set forth in the Declaration (which generally only includes the interior airspace between the perimeter walls and excludes interior structural components). For your reference, the area of the Unit, determined in accordance with those defined unit boundaries, is 1,202 square feet (levels 9-12, 14-21), 1,200 square feet (levels 22-33) and 1,206 square feet (levels 34-41). Note that measurements of rooms set forth on this floor plan are generally taken at the greatest points of each given room (as if the room were a perfect rectangle), without regard for any cutouts. Accordingly, the area of the actual room will typically be smaller than the product obtained by multiplying the stated length times width. All dimensions are approximate and may vary with actual construction, and all floor plans and development plans are subject to change. The size and configuration of balconies and terraces varies throughout the building. The balcony depicted above is among the larger balconies and is not reflective of the actual size or configuration of the balcony for each unit of this unit type. For the actual size and configuration of the balcony for your unit, see Exhibit "2" to the Declaration of Condominium. See legal disclaimer on back cover.

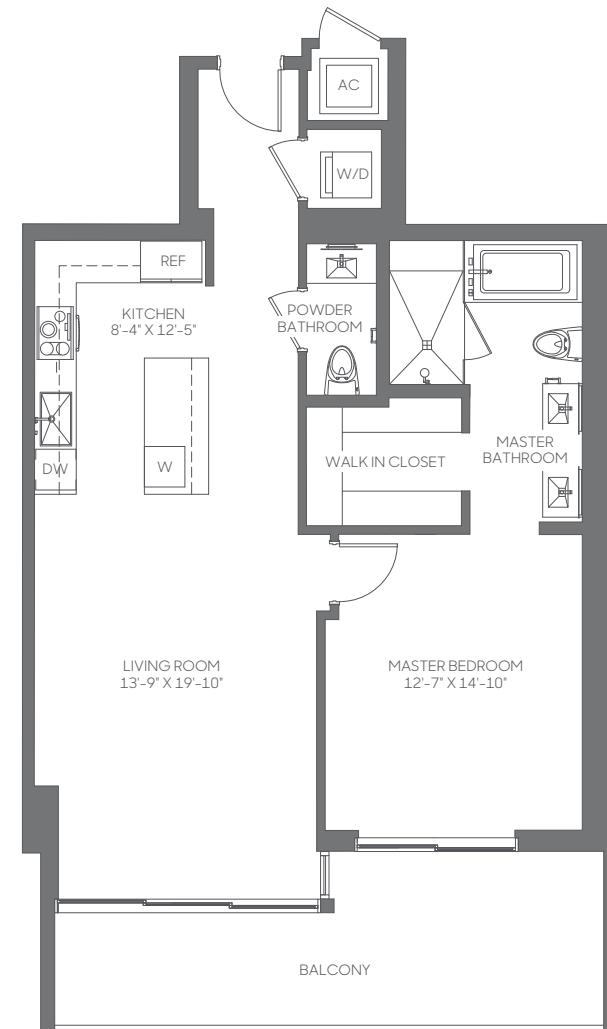
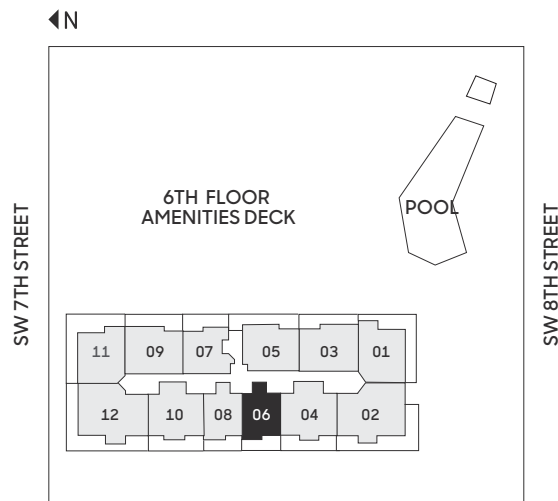


06
LINE

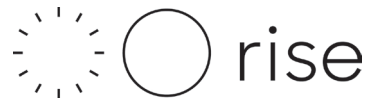
1 BEDROOM | 1.5 BATHROOMS

FLOORS: 8-12, 14-41

RESIDENCE (9-12, 14-21)	983 sq. ft.	91 sq. mt.
RESIDENCE (22-33)	982 sq. ft.	91 sq. mt.
RESIDENCE (34-41)	986 sq. ft.	92 sq. mt.
BALCONY	83-187 sq. ft.	8-17 sq. mt.
TOTAL	1,065-1,170 sq. ft.	98-108 sq. mt.



Stated dimensions are measured to the exterior boundaries of the exterior walls and the centerline of interior demising walls, including common elements such as structural walls and other interior structural components of the building, and in fact vary from the dimensions that would be determined by using the description and definition of the "Unit" set forth in the Declaration (which generally only includes the interior airspace between the perimeter walls and excludes interior structural components). For your reference, the area of the Unit, determined in accordance with those defined unit boundaries, is 886 square feet (levels 9-12, 14-21), 887 square feet (levels 22-33) and 889 square feet (levels 34-41). Note that measurements of rooms set forth on this floor plan are generally taken at the greatest points of each given room (as if the room were a perfect rectangle), without regard for any cutouts. Accordingly, the area of the actual room will typically be smaller than the product obtained by multiplying the stated length times width. All dimensions are approximate and may vary with actual construction, and all floor plans and development plans are subject to change. The size and configuration of balconies and terraces varies throughout the building. The balcony depicted above is among the larger balconies and is not reflective of the actual size or configuration of the balcony for each unit of this unit type. For the actual size and configuration of the balcony for your unit, see Exhibit "2" to the Declaration of Condominium. See legal disclaimer on back cover.

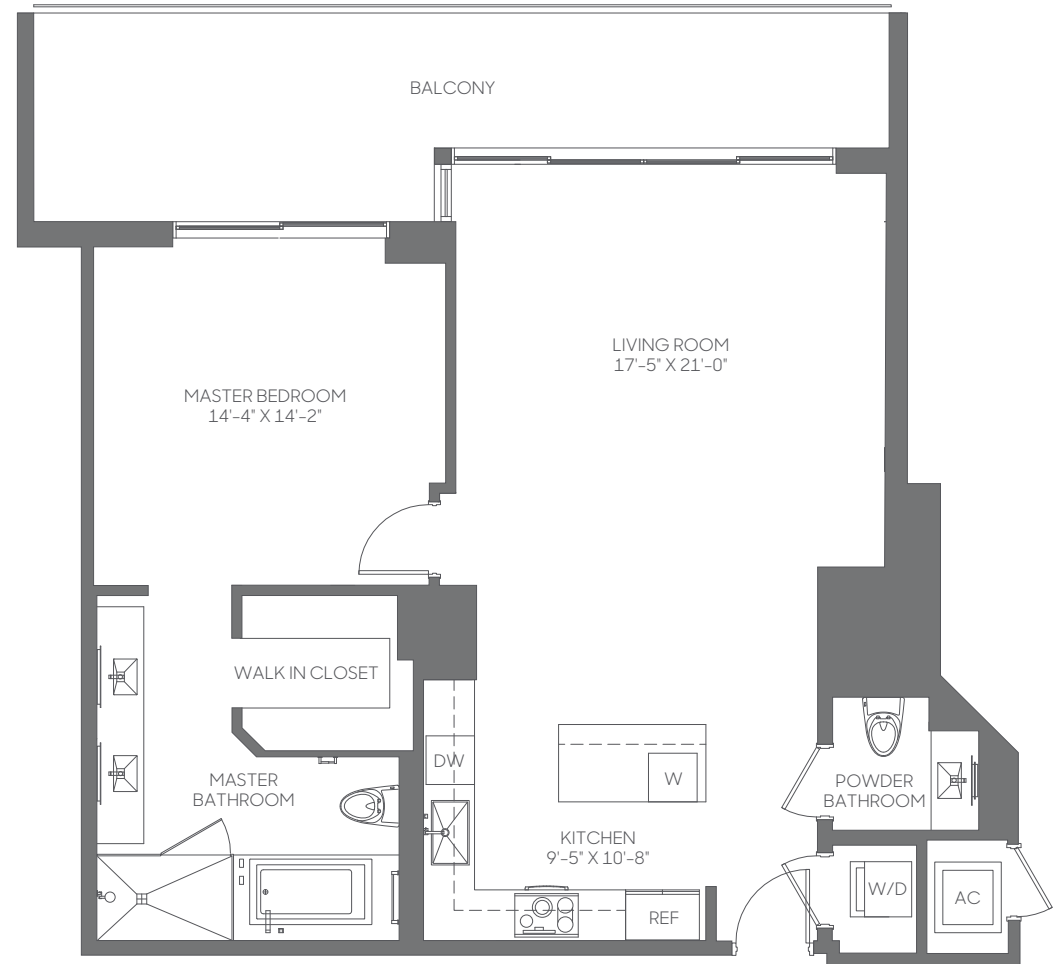
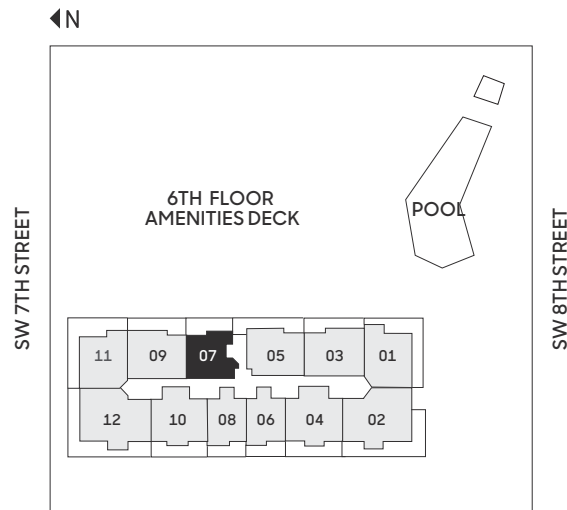


07
LINE

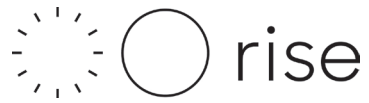
1 BEDROOM | 1.5 BATHROOMS

FLOORS: 8-12, 14-41

RESIDENCE	1,070 sq. ft.	99 sq. mt.
BALCONY	137-241 sq. ft.	13-22 sq. mt.
TOTAL	1,207-1,311 sq. ft.	112-121 sq. mt.



Stated dimensions are measured to the exterior boundaries of the exterior walls and the centerline of interior demising walls, including common elements such as structural walls and other interior structural components of the building, and in fact vary from the dimensions that would be determined by using the description and definition of the "Unit" set forth in the Declaration (which generally only includes the interior airspace between the perimeter walls and excludes interior structural components). For your reference, the area of the Unit, determined in accordance with those defined unit boundaries, is 994 square feet (levels 8-12, 14-33) and 997 square feet (levels 34-41). Note that measurements of rooms set forth on this floor plan are generally taken at the greatest points of each given room (as if the room were a perfect rectangle), without regard for any cutouts. Accordingly, the area of the actual room will typically be smaller than the product obtained by multiplying the stated length times width. All dimensions are approximate and may vary with actual construction, and all floor plans and development plans are subject to change. The size and configuration of balconies and terraces varies throughout the building. The balcony depicted above is among the larger balconies and is not reflective of the actual size or configuration of the balcony for each unit of this unit type. For the actual size and configuration of the balcony for your unit, see Exhibit "2" to the Declaration of Condominium. See legal disclaimer on back cover.

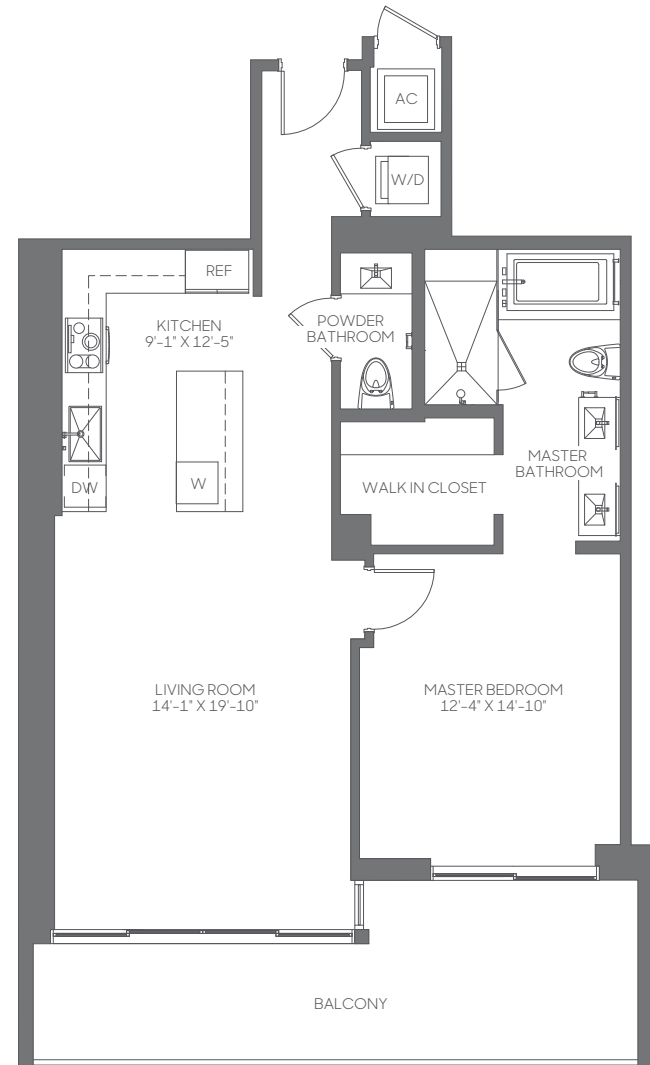
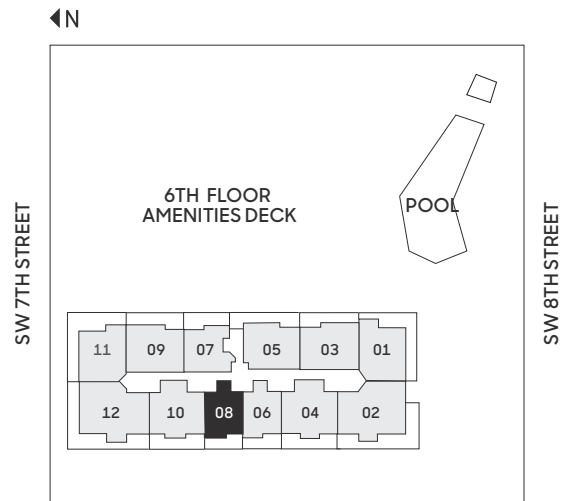


08
LINE

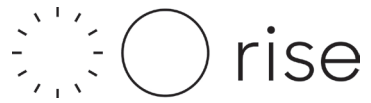
1 BEDROOM | 1.5 BATHROOMS

FLOORS: 8-12, 14-41

RESIDENCE (8-12, 14-33)	986 sq. ft.	92 sq. mt.
RESIDENCE (34-41)	987 sq. ft.	92 sq. mt.
BALCONY	104-196 sq. ft.	10-18 sq. mt.
TOTAL	1,090-1,187 sq. ft.	101-110 sq. mt.



Stated dimensions are measured to the exterior boundaries of the exterior walls and the centerline of interior demising walls, including common elements such as structural walls and other interior structural components of the building, and in fact vary from the dimensions that would be determined by using the description and definition of the "Unit" set forth in the Declaration (which generally only includes the interior airspace between the perimeter walls and excludes interior structural components). For your reference, the area of the Unit, determined in accordance with those defined unit boundaries, is 883 square feet (levels 8-12, 14-33) and 885 square feet (levels 34-41). Note that measurements of rooms set forth on this floor plan are generally taken at the greatest points of each given room (as if the room were a perfect rectangle), without regard for any cutouts. Accordingly, the area of the actual room will typically be smaller than the product obtained by multiplying the stated length times width. All dimensions are approximate and may vary with actual construction, and all floor plans and development plans are subject to change. The size and configuration of balconies and terraces varies throughout the building. The balcony depicted above is among the larger balconies and is not reflective of the actual size or configuration of the balcony for each unit of this unit type. For the actual size and configuration of the balcony for your unit, see Exhibit "2" to the Declaration of Condominium. See legal disclaimer on back cover.

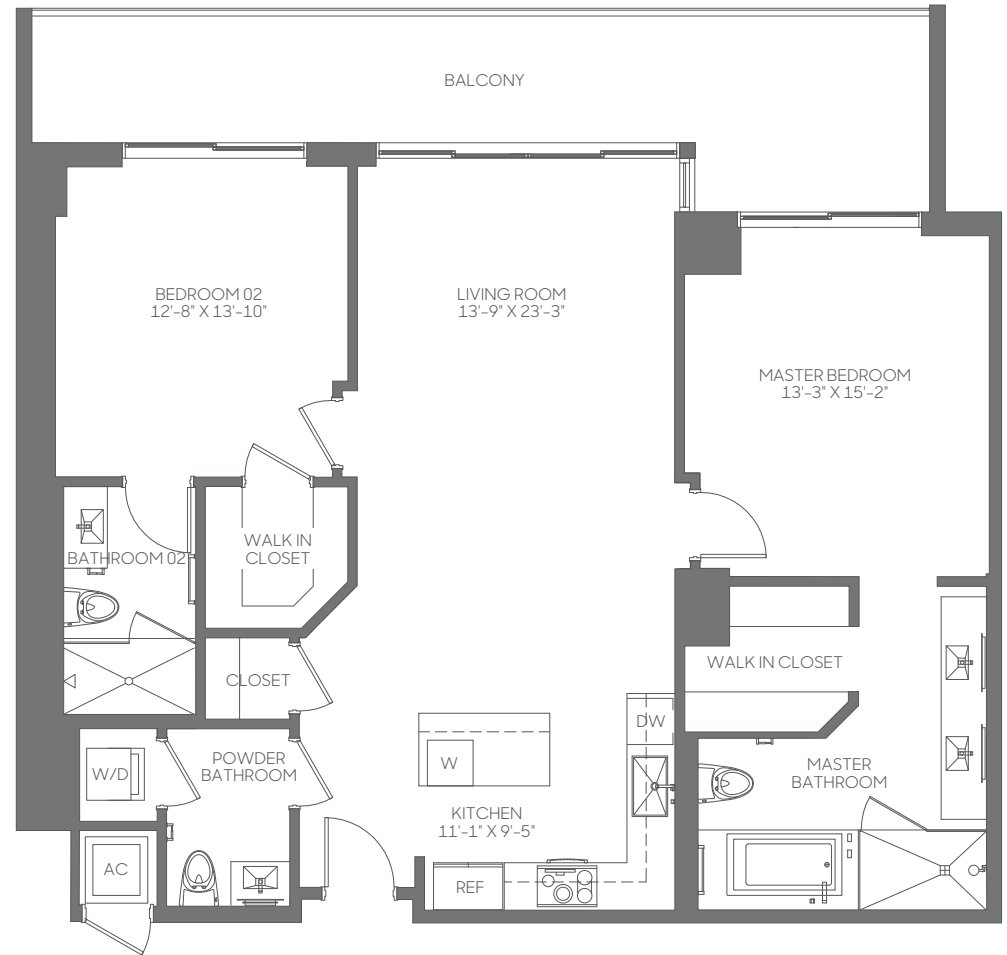
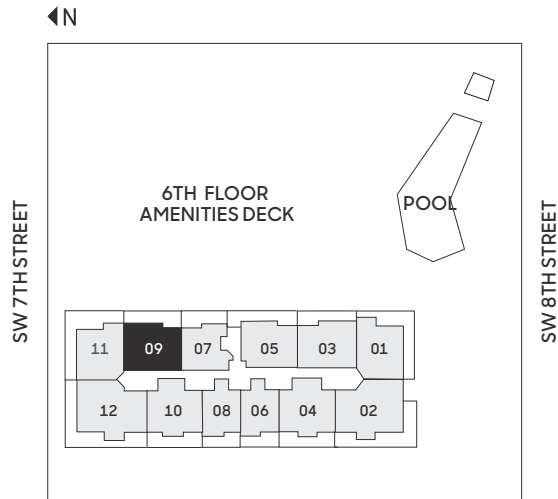


09
LINE

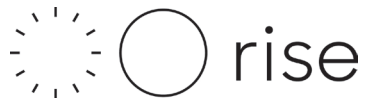
2 BEDROOMS | 2.5 BATHROOMS

FLOORS: 8-12, 14-41

RESIDENCE (8)	1,347 sq. ft.	125 sq. mt.
RESIDENCE (9-12, 14-21)	1,344 sq. ft.	125 sq. mt.
RESIDENCE (22-33)	1,356 sq. ft.	126 sq. mt.
RESIDENCE (34-41)	1,362 sq. ft.	127 sq. mt.
BALCONY	84-245 sq. ft.	8-23 sq. mt.
TOTAL	1,440-1,589 sq. ft.	133-147 sq. mt.



Stated dimensions are measured to the exterior boundaries of the exterior walls and the centerline of interior demising walls, including common elements such as structural walls and other interior structural components of the building, and in fact vary from the dimensions that would be determined by using the description and definition of the "Unit" set forth in the Declaration (which generally only includes the interior airspace between the perimeter walls and excludes interior structural components). For your reference, the area of the Unit, determined in accordance with those defined unit boundaries, is 1,238 square feet (levels 8-12, 14-21), 1,249 square feet (levels 22-33) and 1,259 square feet (levels 34-41). Note that measurements of rooms set forth on this floor plan are generally taken at the greatest points of each given room (as if the room were a perfect rectangle), without regard for any cutouts. Accordingly, the area of the actual room will typically be smaller than the product obtained by multiplying the stated length times width. All dimensions are approximate and may vary with actual construction, and all floor plans and development plans are subject to change. The size and configuration of balconies and terraces varies throughout the building. The balcony depicted above is among the larger balconies and is not reflective of the actual size or configuration of the balcony for each unit of this unit type. For the actual size and configuration of the balcony for your unit, see Exhibit "2" to the Declaration of Condominium. See legal disclaimer on back cover.

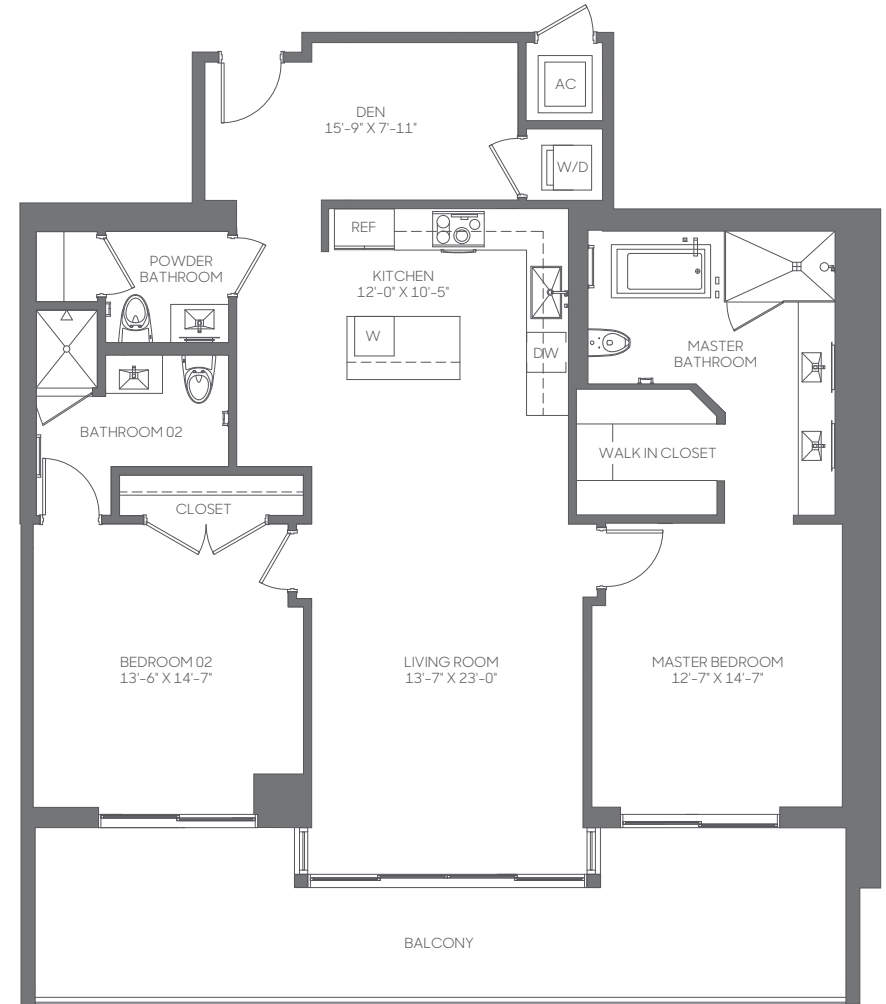
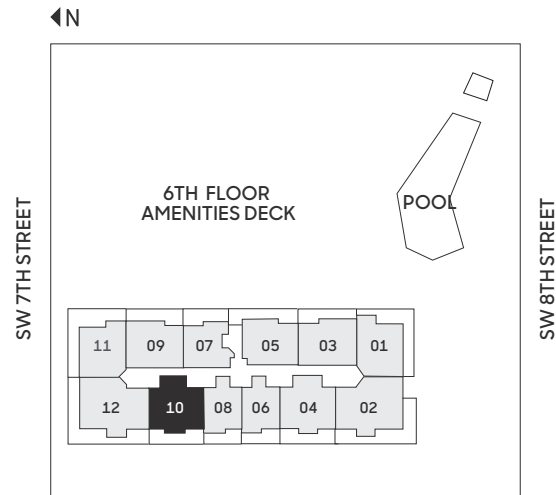


10
LINE

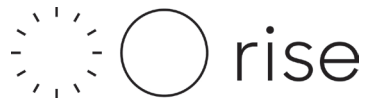
2 BEDROOMS | 2.5 BATHROOMS | DEN

FLOORS: 8-12, 14-41

RESIDENCE (8-12, 14-33)	1,504 sq. ft.	140 sq. mt.
RESIDENCE (34-41)	1,515 sq. ft.	141 sq. mt.
BALCONY	131-300 sq. ft.	12-28 sq. mt.
TOTAL	1,635-1,804 sq. ft.	151-167 sq. mt.



Stated dimensions are measured to the exterior boundaries of the exterior walls and the centerline of interior demising walls, including common elements such as structural walls and other interior structural components of the building, and in fact vary from the dimensions that would be determined by using the description and definition of the "Unit" set forth in the Declaration (which generally only includes the interior airspace between the perimeter walls and excludes interior structural components). For your reference, the area of the Unit, determined in accordance with those defined unit boundaries, is 1,370 square feet (levels 8-12, 14-21), 1,393 square feet (levels 22-33), and 1,401 square feet (levels 34-41). Note that measurements of rooms set forth on this floor plan are generally taken at the greatest points of each given room (as if the room were a perfect rectangle), without regard for any cutouts. Accordingly, the area of the actual room will typically be smaller than the product obtained by multiplying the stated length times width. All dimensions are approximate and may vary with actual construction, and all floor plans and development plans are subject to change. The size and configuration of balconies and terraces varies throughout the building. The balcony depicted above is among the larger balconies and is not reflective of the actual size or configuration of the balcony for each unit of this unit type. For the actual size and configuration of the balcony for your unit, see Exhibit "2" to the Declaration of Condominium. See legal disclaimer on back cover.

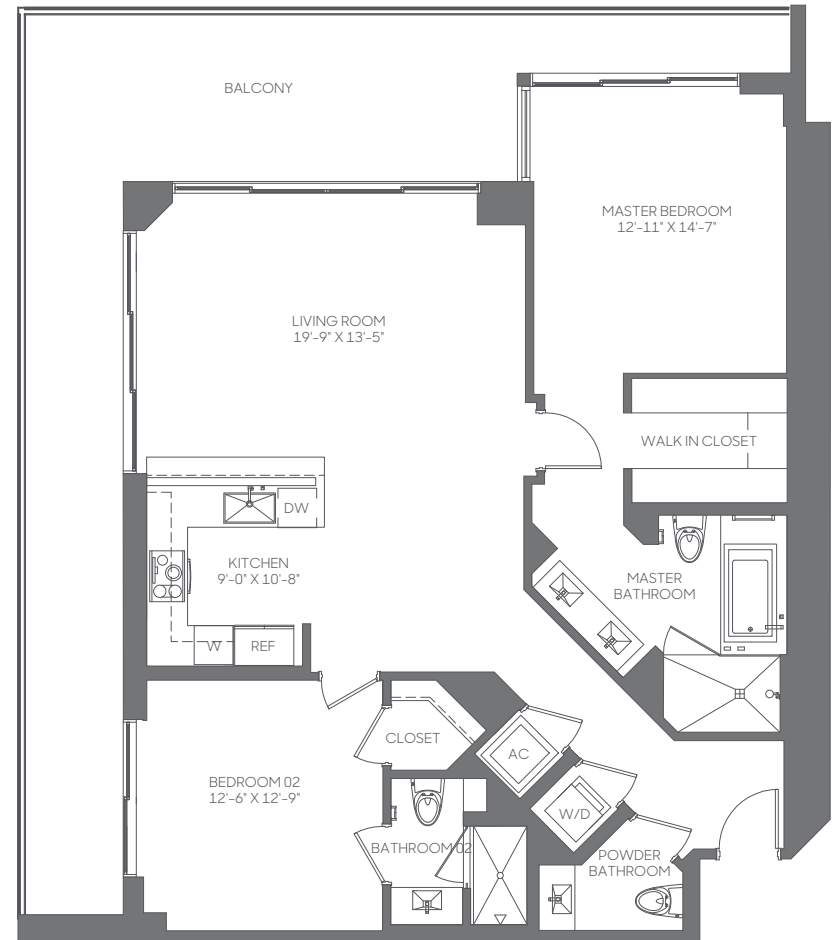
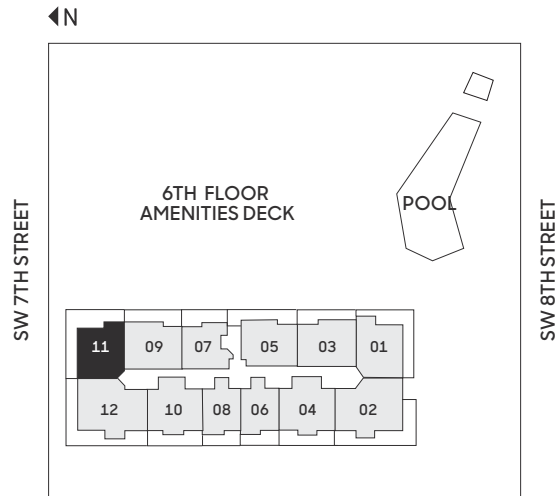


11
LINE

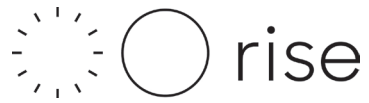
2 BEDROOMS | 2.5 BATHROOMS

FLOORS: 7-12, 14-36

RESIDENCE (7-12, 14-21)	1,391 sq. ft.	129 sq. mt.
RESIDENCE (22-33)	1,383 sq. ft.	128 sq. mt.
RESIDENCE (34-36)	1,377 sq. ft.	128 sq. mt.
BALCONY	292-441 sq. ft.	27-41 sq. mt.
TOTAL	1,675-1,831 sq. ft.	155-170 sq. mt.



Stated dimensions are measured to the exterior boundaries of the exterior walls and the centerline of interior demising walls, including common elements such as structural walls and other interior structural components of the building, and in fact vary from the dimensions that would be determined by using the description and definition of the "Unit" set forth in the Declaration (which generally only includes the interior airspace between the perimeter walls and excludes interior structural components). For your reference, the area of the Unit, determined in accordance with those defined unit boundaries, is 1,264 square feet (levels 7-12, 14-33) and 1,266 square feet (levels 34-36). Note that measurements of rooms set forth on this floor plan are generally taken at the greatest points of each given room (as if the room were a perfect rectangle), without regard for any cutouts. Accordingly, the area of the actual room will typically be smaller than the product obtained by multiplying the stated length times width. All dimensions are approximate and may vary with actual construction, and all floor plans and development plans are subject to change. The size and configuration of balconies and terraces varies throughout the building. The balcony depicted above is among the larger balconies and is not reflective of the actual size or configuration of the balcony for each unit of this unit type. For the actual size and configuration of the balcony for your unit, see Exhibit '2' to the Declaration of Condominium. See legal disclaimer on back cover.

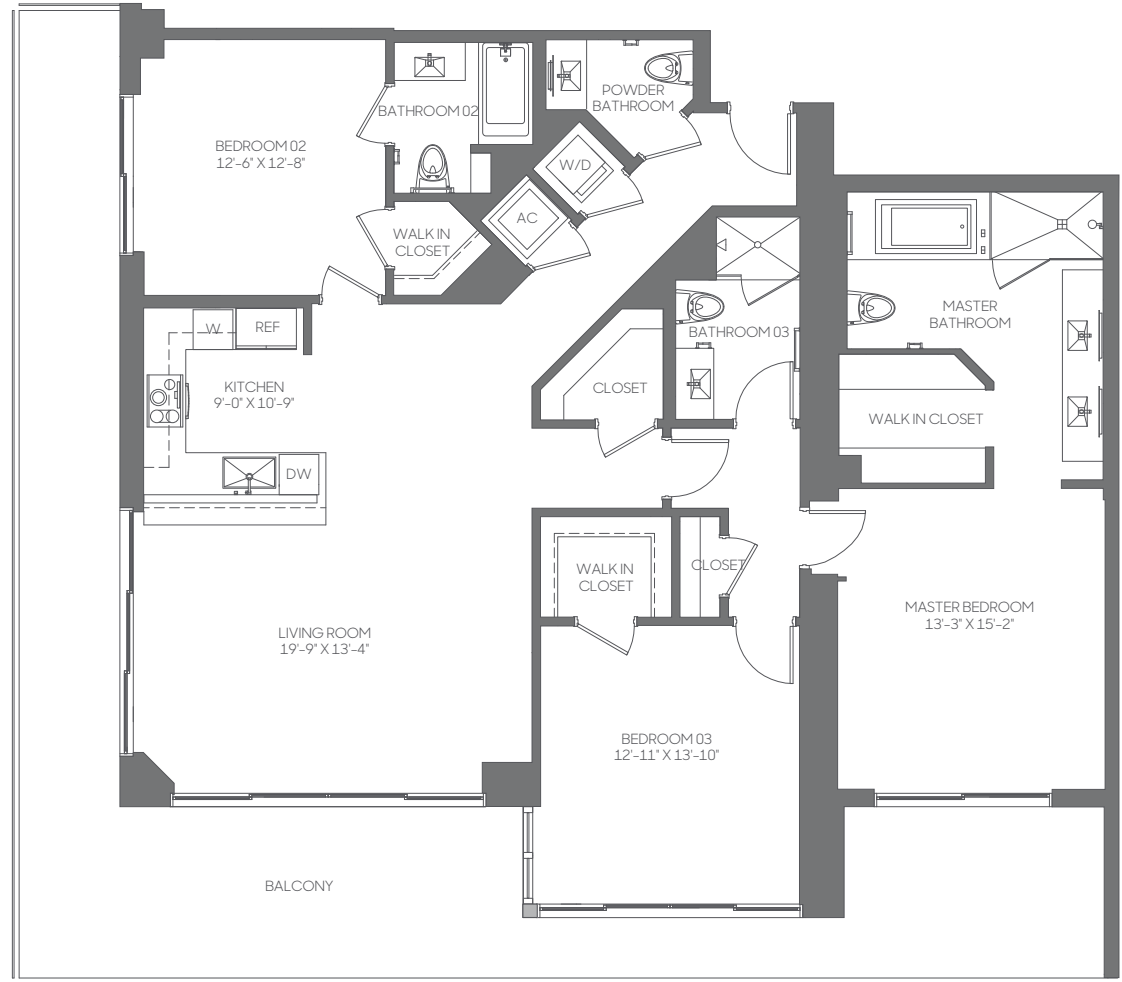
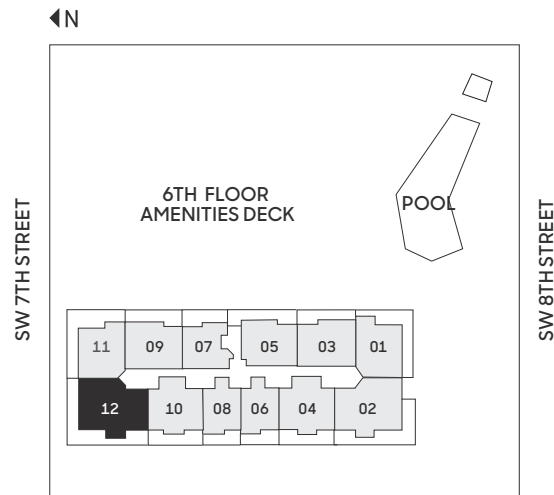


12
LINE

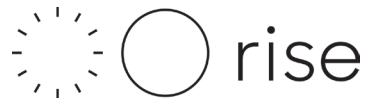
3 BEDROOMS | 3.5 BATHROOMS

FLOORS: 7-12, 14-36

RESIDENCE (7-12, 14-21)	1,835 sq. ft.	170 sq. mt.
RESIDENCE (22-36)	1,839 sq. ft.	171 sq. mt.
BALCONY	338-568 sq. ft.	31-53 sq. mt.
TOTAL	2,178-2,407 sq. ft.	202-223 sq. mt.



Stated dimensions are measured to the exterior boundaries of the exterior walls and the centerline of interior demising walls, including common elements such as structural walls and other interior structural components of the building, and in fact vary from the dimensions that would be determined by using the description and definition of the "Unit" set forth in the Declaration (which generally only includes the interior airspace between the perimeter walls and excludes interior structural components). For your reference, the area of the Unit, determined in accordance with those defined unit boundaries, is 1,647 square feet (level 7-12, 14-21), 1,664 SF (levels 22-33) and 1,676 SF (levels 34-36). Note that measurements of rooms set forth on this floor plan are generally taken at the greatest points of each given room (as if the room were a perfect rectangle), without regard for any cutouts. Accordingly, the area of the actual room will typically be smaller than the product obtained by multiplying the stated length times width. All dimensions are approximate and may vary with actual construction, and all floor plans and development plans are subject to change. The size and configuration of balconies and terraces varies throughout the building. The balcony depicted above is among the larger balconies and is not reflective of the actual size or configuration of the balcony for each unit of this unit type. For the actual size and configuration of the balcony for your unit, see Exhibit "2" to the Declaration of Condominium. See legal disclaimer on back cover.

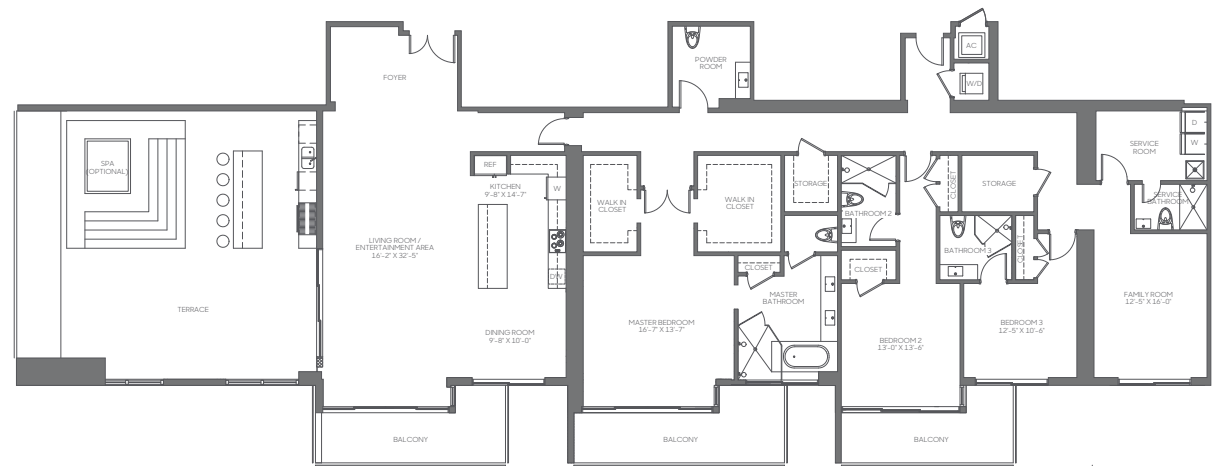
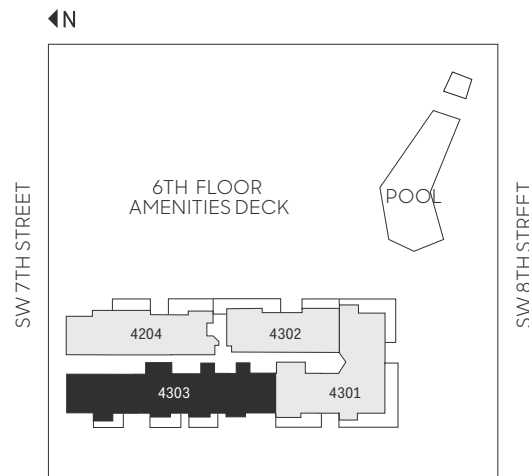


4303
PENTHOUSE

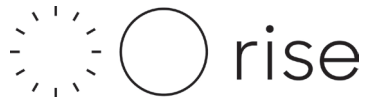
3 BEDROOMS | 4.5 BATHROOMS
DINING | SERVICE QUARTERS | TERRACE

FLOOR: 43

RESIDENCE	3,430 sq. ft.	319 sq. mt.
BALCONY	398 sq. ft.	37 sq. mt.
TERRACE	943 sq. ft.	88 sq. mt.
TOTAL	4,771 sq. ft.	444 sq. mt.



Stated dimensions are measured to the exterior boundaries of the exterior walls and the centerline of interior demising walls, including common elements such as structural walls and other interior structural components of the building, and in fact vary from the dimensions that would be determined by using the description and definition of the "Unit" set forth in the Declaration (which generally only includes the interior airspace between the perimeter walls and excludes interior structural components). For your reference, the area of the Unit, determined in accordance with those defined unit boundaries, is 3,128 square feet. Note that measurements of rooms set forth on this floor plan are generally taken at the greatest points of each given room (as if the room were a perfect rectangle), without regard for any cutouts. Accordingly, the area of the actual room will typically be smaller than the product obtained by multiplying the stated length times width. All dimensions are approximate and may vary with actual construction, and all floor plans and development plans are subject to change. The size and configuration of balconies and terraces varies throughout the building. The balcony depicted above is among the larger balconies and is not reflective of the actual size or configuration of the balcony for each unit of this unit type. For the actual size and configuration of the balcony for your unit, see Exhibit "2" to the Declaration of Condominium. See legal disclaimer on back cover.

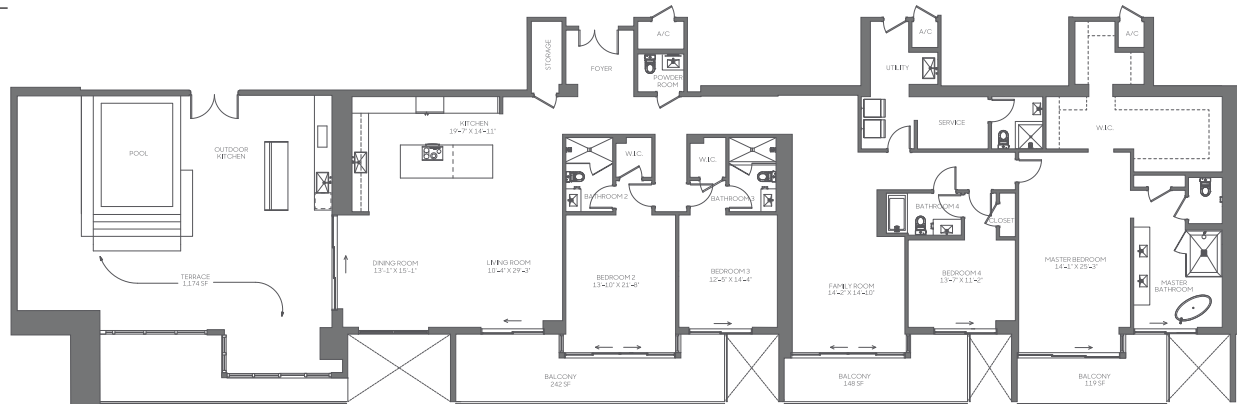
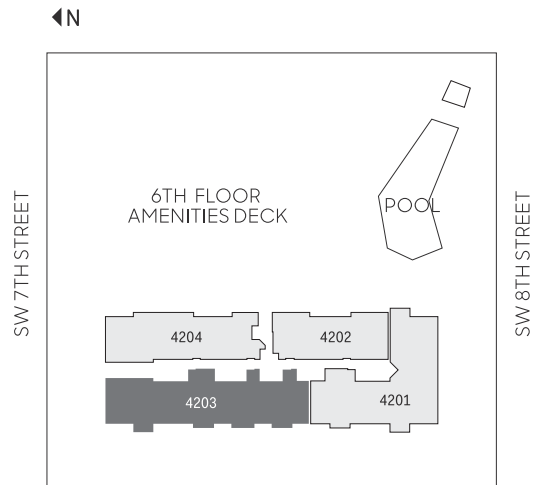


4203
PENTHOUSE

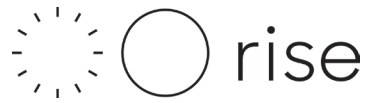
4 BEDROOMS | 5.5 BATHROOMS
FAMILY | SERVICE QUARTERS | TERRACE

FLOOR: 42

RESIDENCE	3,904 sq. ft.	363 sq. mt.
BALCONY	509 sq. ft.	47 sq. mt.
TERRACE	1,174 sq. ft.	109 sq. mt.
TOTAL	5,587 sq. ft.	519 sq. mt.



Stated dimensions are measured to the exterior boundaries of the exterior walls and the centerline of interior demising walls, including common elements such as structural walls and other interior structural components of the building, and in fact vary from the dimensions that would be determined by using the description and definition of the "Unit" set forth in the Declaration (which generally only includes the interior airspace between the perimeter walls and excludes interior structural components). For your reference, the area of the Unit, determined in accordance with those defined unit boundaries, is 3,626 square feet. Note that measurements of rooms set forth on this floor plan are generally taken at the greatest points of each given room (as if the room were a perfect rectangle), without regard for any cutouts. Accordingly, the area of the actual room will typically be smaller than the product obtained by multiplying the stated length times width. All dimensions are approximate and may vary with actual construction, and all floor plans and development plans are subject to change. The size and configuration of balconies and terraces varies throughout the building. The balcony depicted above is among the larger balconies and is not reflective of the actual size or configuration of the balcony for each unit of this unit type. For the actual size and configuration of the balcony for your unit, see Exhibit "2" to the Declaration of Condominium. See legal disclaimer on back cover.

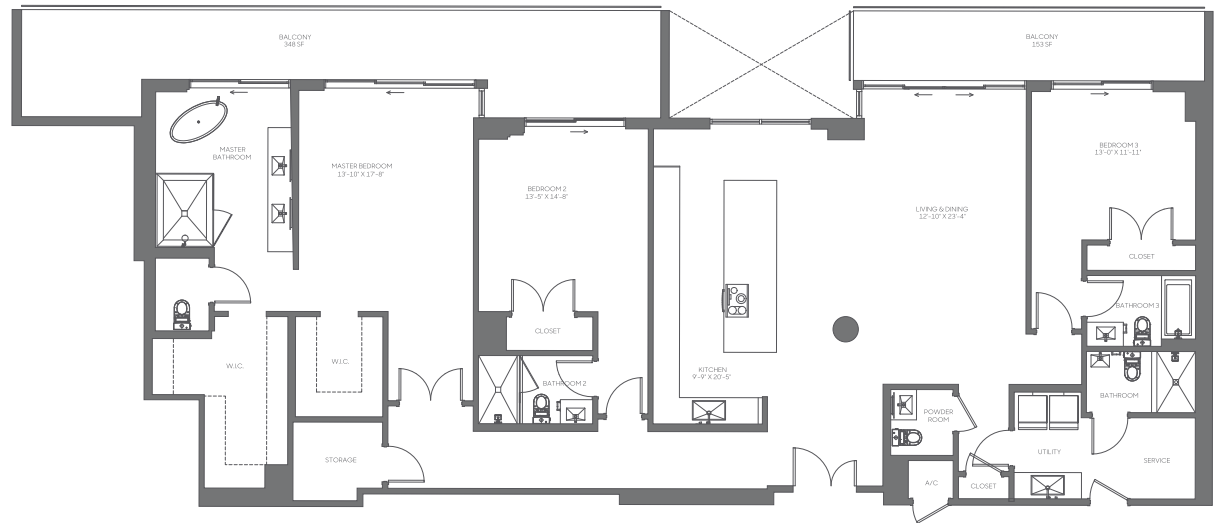
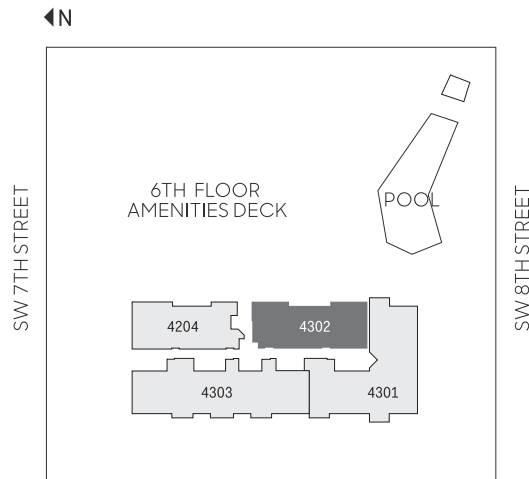


4302
PENTHOUSE

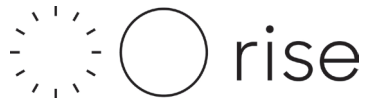
3 BEDROOMS | 4.5 BATHROOMS
UTILITY | SERVICE QUARTERS

FLOOR: 43

RESIDENCE	2,686 sq. ft.	250 sq. mt.
BALCONY	501 sq. ft.	47 sq. mt.
TOTAL	3,187 sq. ft.	297 sq. mt.



Stated dimensions are measured to the exterior boundaries of the exterior walls and the centerline of interior demising walls, including common elements such as structural walls and other interior structural components of the building, and in fact vary from the dimensions that would be determined by using the description and definition of the "Unit" set forth in the Declaration (which generally only includes the interior airspace between the perimeter walls and excludes interior structural components). For your reference, the area of the Unit, determined in accordance with those defined unit boundaries, is 2,491 square feet. Note that measurements of rooms set forth on this floor plan are generally taken at the greatest points of each given room (as if the room were a perfect rectangle), without regard for any cutouts. Accordingly, the area of the actual room will typically be smaller than the product obtained by multiplying the stated length times width. All dimensions are approximate and may vary with actual construction, and all floor plans and development plans are subject to change. The size and configuration of balconies and terraces varies throughout the building. The balcony depicted above is among the larger balconies and is not reflective of the actual size or configuration of the balcony for each unit of this unit type. For the actual size and configuration of the balcony for your unit, see Exhibit "2" to the Declaration of Condominium. See legal disclaimer on back cover.



4202
PENTHOUSE

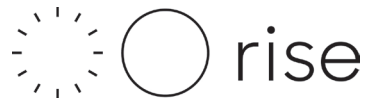
3 BEDROOMS | 4.5 BATHROOMS UTILITY | SERVICE QUARTERS

FLOOR: 42

RESIDENCE	2,686 sq. ft.	250 sq. mt.
BALCONY	501 sq. ft.	47 sq. mt.
TOTAL	3,187 sq. ft.	297 sq. mt.



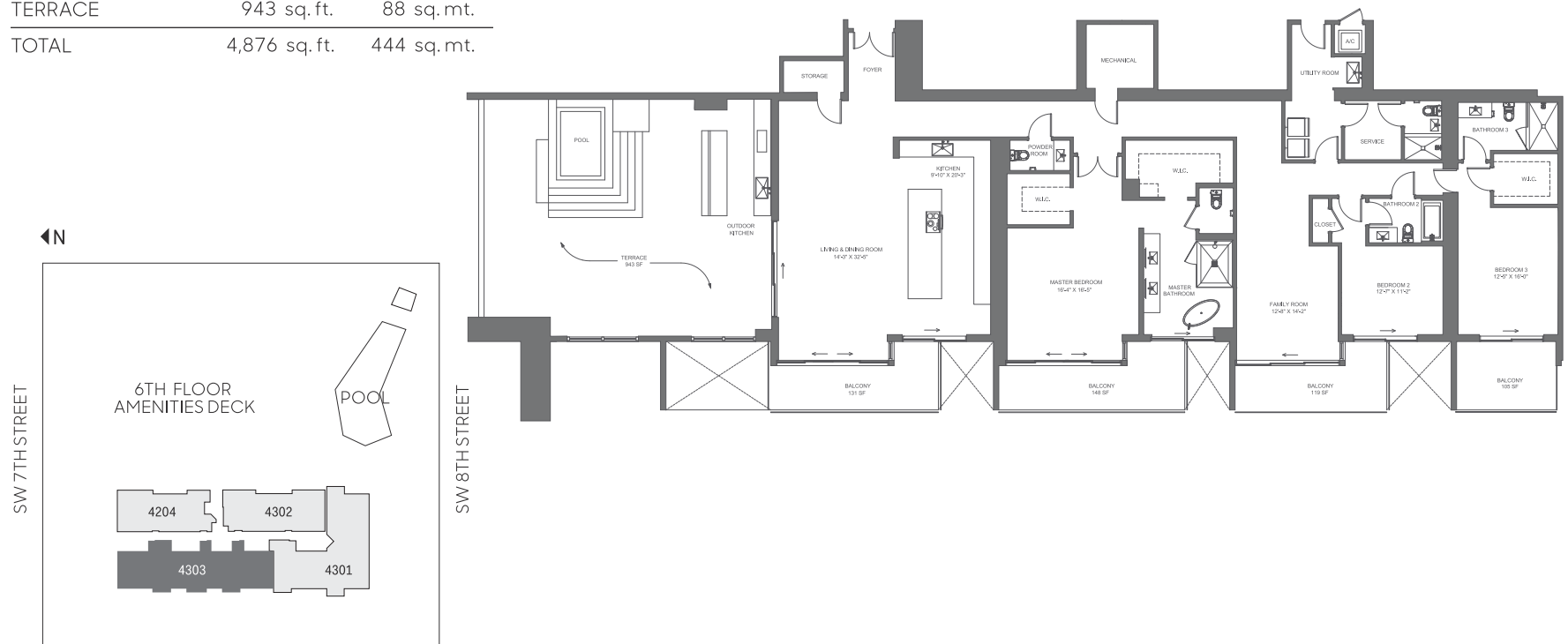
Stated dimensions are measured to the exterior boundaries of the exterior walls and the centerline of interior demising walls, including common elements such as structural walls and other interior structural components of the building, and in fact vary from the dimensions that would be determined by using the description and definition of the "Unit" set forth in the Declaration (which generally only includes the interior airspace between the perimeter walls and excludes interior structural components). For your reference, the area of the Unit, determined in accordance with those defined unit boundaries, is 2,514 square feet. Note that measurements of rooms set forth on this floor plan are generally taken at the greatest points of each given room (as if the room were a perfect rectangle), without regard for any cutouts. Accordingly, the area of the actual room will typically be smaller than the product obtained by multiplying the stated length times width. All dimensions are approximate and may vary with actual construction, and all floor plans and development plans are subject to change. The size and configuration of balconies and terraces varies throughout the building. The balcony depicted above is among the larger balconies and is not reflective of the actual size or configuration of the balcony for each unit of this unit type. For the actual size and configuration of the balcony for your unit, see Exhibit "2" to the Declaration of Condominium. See legal disclaimer on back cover.



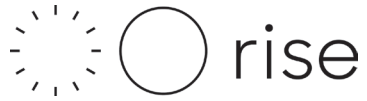
4303
PENTHOUSE

3 BEDROOMS | 4.5 BATHROOMS
DINING | SERVICE QUARTERS | TERRACE
FLOOR: 43

RESIDENCE	3,430 sq. ft.	319 sq. mt.
BALCONY	503 sq. ft.	37 sq. mt.
TERRACE	943 sq. ft.	88 sq. mt.
TOTAL	4,876 sq. ft.	444 sq. mt.



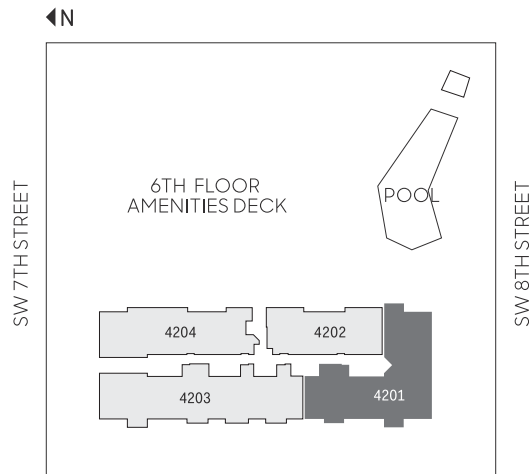
Stated dimensions are measured to the exterior boundaries of the exterior walls and the centerline of interior demising walls, including common elements such as structural walls and other interior structural components of the building, and in fact vary from the dimensions that would be determined by using the description and definition of the "Unit" set forth in the Declaration (which generally only includes the interior airspace between the perimeter walls and excludes interior structural components). For your reference, the area of the Unit, determined in accordance with those defined unit boundaries, is 3,080 square feet. Note that measurements of rooms set forth on this floor plan are generally taken at the greatest points of each given room (as if the room were a perfect rectangle), without regard for any cutouts. Accordingly, the area of the actual room will typically be smaller than the product obtained by multiplying the stated length times width. All dimensions are approximate and may vary with actual construction, and all floor plans and development plans are subject to change. The size and configuration of balconies and terraces varies throughout the building. The balcony depicted above is among the larger balconies and is not reflective of the actual size or configuration of the balcony for each unit of this unit type. For the actual size and configuration of the balcony for your unit, see Exhibit "2" to the Declaration of Condominium. See legal disclaimer on back cover.



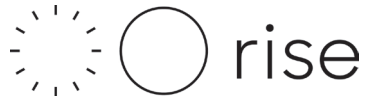
4201
PENTHOUSE

5 BEDROOMS | 6.5 BATHROOMS
DINING | UTILITY | SERVICE QUARTERS
FLOOR: 42

RESIDENCE	4,754 sq. ft.	442 sq. mt.
BALCONY	1,035 sq. ft.	96 sq. mt.
TOTAL	5,789 sq. ft.	538 sq. mt.



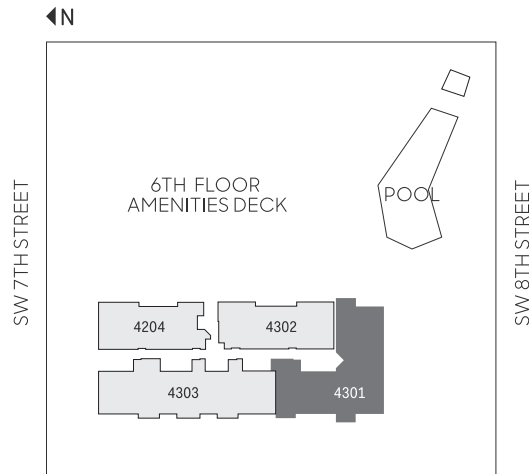
Stated dimensions are measured to the exterior boundaries of the exterior walls and the centerline of interior demising walls, including common elements such as structural walls and other interior structural components of the building, and in fact vary from the dimensions that would be determined by using the description and definition of the "Unit" set forth in the Declaration (which generally only includes the interior airspace between the perimeter walls and excludes interior structural components). For your reference, the area of the Unit, determined in accordance with those defined unit boundaries, is 4,424 square feet. Note that measurements of rooms set forth on this floor plan are generally taken at the greatest points of each given room (as if the room were a perfect rectangle), without regard for any cutouts. Accordingly, the area of the actual room will typically be smaller than the product obtained by multiplying the stated length times width. All dimensions are approximate and may vary with actual construction, and all floor plans and development plans are subject to change. The size and configuration of balconies and terraces varies throughout the building. The balcony depicted above is among the larger balconies and is not reflective of the actual size or configuration of the balcony for each unit of this unit type. For the actual size and configuration of the balcony for your unit, see Exhibit "2" to the Declaration of Condominium. See legal disclaimer on back cover.



4301
PENTHOUSE

4 BEDROOMS | 5.5 BATHROOMS
FAMILY | UTILITY | SERVICE QUARTERS
FLOOR: 43

RESIDENCE	4,335 sq. ft.	403 sq. mt.
BALCONY	1,035 sq. ft.	96 sq. mt.
TOTAL	5,370 sq. ft.	499 sq. mt.



Stated dimensions are measured to the exterior boundaries of the exterior walls and the centerline of interior demising walls, including common elements such as structural walls and other interior structural components of the building, and in fact vary from the dimensions that would be determined by using the description and definition of the "Unit" set forth in the Declaration (which generally only includes the interior airspace between the perimeter walls and excludes interior structural components). For your reference, the area of the Unit, determined in accordance with those defined unit boundaries, is 4,021 square feet. Note that measurements of rooms set forth on this floor plan are generally taken at the greatest points of each given room (as if the room were a perfect rectangle), without regard for any cutouts. Accordingly, the area of the actual room will typically be smaller than the product obtained by multiplying the stated length times width. All dimensions are approximate and may vary with actual construction, and all floor plans and development plans are subject to change. The size and configuration of balconies and terraces varies throughout the building. The balcony depicted above is among the larger balconies and is not reflective of the actual size or configuration of the balcony for each unit of this unit type. For the actual size and configuration of the balcony for your unit, see Exhibit "2" to the Declaration of Condominium. See legal disclaimer on back cover.